

**TOP ALTITUDE:  
ASSIGNED BY ATC**

(AEX3.AEX) 25331  
**ALEXANDRIA THREE DEPARTURE**

AL-5537 (FAA)

**SUGAR LAND RGNL (SGR)**  
HOUSTON, TEXAS

HOUSTON DEP CON  
123.8 257.7  
ATIS  
118.125  
CLNC DEL  
121.4  
CLNC DEL  
119.25 (When twr closed)  
GND CON  
121.4  
SUGARLAND TOWER ★  
118.65 (CTAF)

LUFKIN  
112.1 LFK  
Chan 58

ALEXANDRIA  
116.1 AEX  
Chan 108

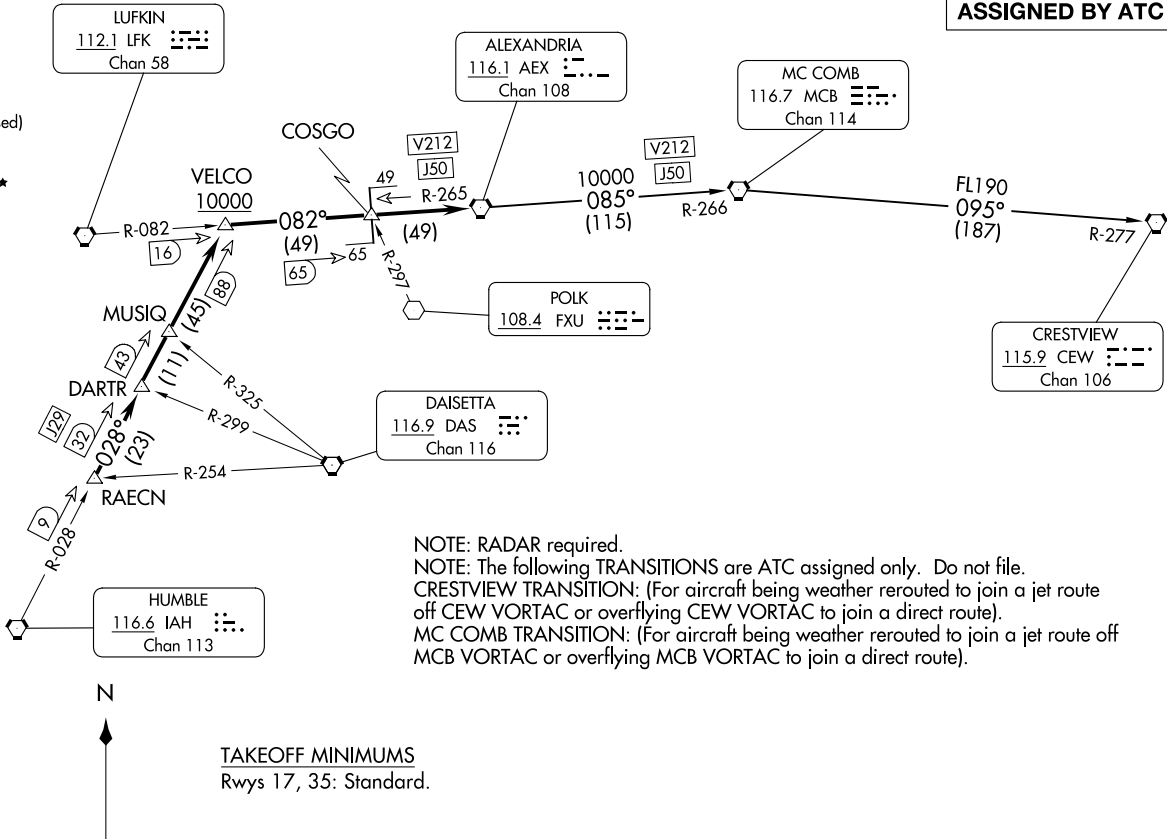
MC COMB  
116.7 MCB  
Chan 114

POLK  
108.4 FXU

DAISETTA  
116.9 DAS  
Chan 116

HUMBLE  
116.6 IAH  
Chan 113

CRESTVIEW  
115.9 CEW  
Chan 106



NOTE: RADAR required.  
 NOTE: The following TRANSITIONS are ATC assigned only. Do not file.  
 CRESTVIEW TRANSITION: (For aircraft being weather rerouted to join a jet route off CEW VORTAC or overflying CEW VORTAC to join a direct route).  
 MC COMB TRANSITION: (For aircraft being weather rerouted to join a jet route off MCB VORTAC or overflying MCB VORTAC to join a direct route).

**TAKEOFF MINIMUMS**  
 Rwys 17, 35: Standard.

(CONTINUED ON FOLLOWING PAGE)

NOTE: Chart not to scale.

**ALEXANDRIA THREE DEPARTURE**  
(AEX3.AEX) 07OCT21

HOUSTON, TEXAS  
**SUGAR LAND RGNL (SGR)**

# ALEXANDRIA THREE DEPARTURE



## DEPARTURE ROUTE DESCRIPTION

TAKEOFF RUNWAY 17: Climb on heading 170° to 1500 before turning. When entering controlled airspace, climb on assigned heading for RADAR vectors to RAECN INT. Maintain ATC assigned altitude. Expect filed altitude 10 minutes after departure, thence. . . .

TAKEOFF RUNWAY 35: Climb on heading 350° to 1100 before turning. When entering controlled airspace, climb on assigned heading for RADAR vectors to RAECN INT. Maintain ATC assigned altitude. Expect filed altitude 10 minutes after departure, thence. . . .

. . . .on IAH R-028 to VELCO INT, cross VELCO INT at or above 10000, then right turn on LFK R-082 and AEX R-265 to AEX VORTAC.

CRESTVIEW TRANSITION (AEX3.CEW): From over AEX VORTAC on AEX R-085 and MCB R-266 to MCB VORTAC, then on MCB R-095 and CEW R-277 to CEW VORTAC.

MC COMB TRANSITION (AEX3.MCB): From over AEX VORTAC on AEX R-085 and MCB R-266 to MCB VORTAC.

SC-5, 11 JUN 2026 to 09 JUL 2026

SC-5, 11 JUN 2026 to 09 JUL 2026