

(BLTWY7.BLTWY) 25051

AL-5537 (FAA)

# BLTWY SEVEN DEPARTURE (RNAV)

SUGAR LAND RGNL (SGR)  
HOUSTON, TEXAS

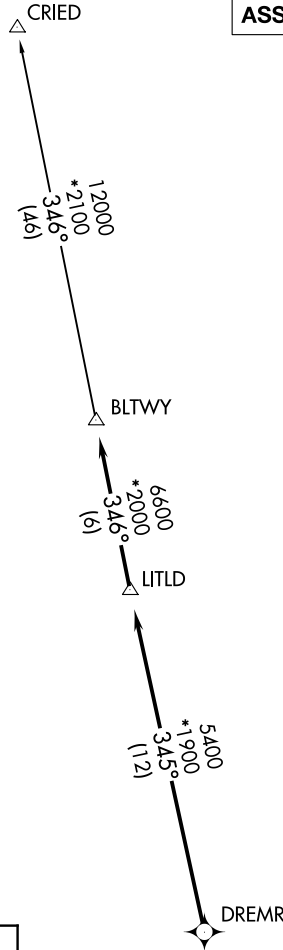
ATIS  
 118.125  
 CLNC DEL  
 121.4  
 CLNC DEL  
 119.25 (when twr closed)  
 GND CON  
 121.4  
 SUGARLAND TOWER\*  
 118.65 (CTAF)  
 HOUSTON DEP CON  
 123.8 257.7

**TOP ALTITUDE:  
ASSIGNED BY ATC**

NOTE: RADAR required.  
 NOTE: DME/DME/IRU or GPS required.  
 NOTE: RNAV 1.

### TAKEOFF MINIMUMS

Rwys 17, 35: Standard with minimum climb of 500' per NM to 600.



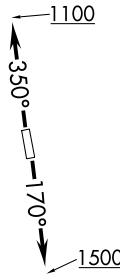
### DEPARTURE ROUTE DESCRIPTION

TAKEOFF RUNWAY 17: Climb on heading 170° to 1500 for RADAR vectors to DREMR, thence . . .

TAKEOFF RUNWAY 35: Climb on heading 350° to 1100 for RADAR vectors to DREMR, thence . . .

...on track 345° to LITLD, then on track 346° to BLTWY, then on (transition). Maintain ATC assigned altitude. Expect filed altitude 10 minutes after departure.

CRIED TRANSITION (BLTWY7.CRIED)



NOTE: Chart not to scale.

**BLTWY SEVEN DEPARTURE (RNAV)**  
 (BLTWY7.BLTWY) 07OCT21

HOUSTON, TEXAS  
 SUGAR LAND RGNL (SGR)

SC-5, 11 JUN 2026 to 09 JUL 2026

SC-5, 11 JUN 2026 to 09 JUL 2026