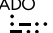


# EL DORADO ONE DEPARTURE

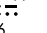
ATIS  
 118.125  
 CLNC DEL  
 121.4  
 CLNC DEL  
 119.25 (when twr closed)  
 GND CON  
 121.4  
 SUGAR LAND TOWER ★  
 118.65 (CTAF)  
 HOUSTON DEP CON  
 123.8 257.7

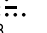
**TOP ALTITUDE:  
ASSIGNED BY ATC**

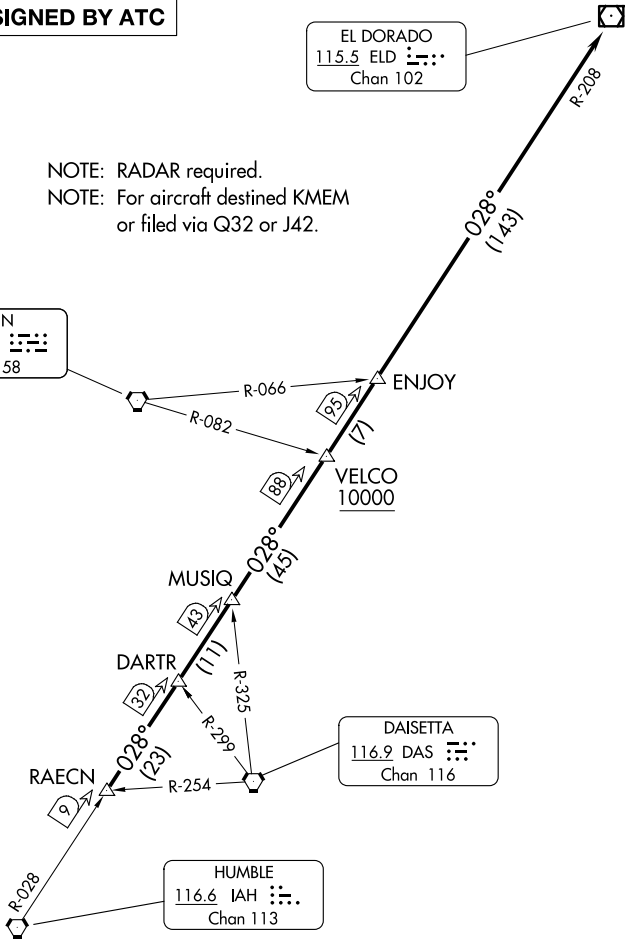
EL DORADO  
 115.5 ELD   
 Chan 102

NOTE: RADAR required.  
 NOTE: For aircraft destined KMEM  
 or filed via Q32 or J42.

LUFKIN  
 112.1 LFK   
 Chan 58

DAISSETA  
 116.9 DAS   
 Chan 116

HUMBLE  
 116.6 IAH   
 Chan 113



**TAKEOFF MINIMUMS**  
 Rwy 17, 35: Standard.

SC-5, 11 JUN 2026 to 09 JUL 2026

SC-5, 11 JUN 2026 to 09 JUL 2026

NOTE: Chart not to scale.

(CONTINUED ON FOLLOWING PAGE)

# EL DORADO ONE DEPARTURE

(ELD1.ELD) 07OCT21

# EL DORADO ONE DEPARTURE



## DEPARTURE ROUTE DESCRIPTION

TAKEOFF RUNWAY 17: Climb on heading 170° to 1500 before turning. When entering controlled airspace, climb on assigned heading for RADAR vectors to RAECN INT. Maintain ATC assigned altitude. Expect filed altitude 10 minutes after departure, thence. . . .

TAKEOFF RUNWAY 35: Climb on heading 350° to 1100 before turning. When entering controlled airspace, climb on assigned heading for RADAR vectors to RAECN INT. Maintain ATC assigned altitude. Expect filed altitude 10 minutes after departure, thence. . . .

. . . .on IAH R-028 and the ELD R-208 to ELD VOR/DME, cross VELCO INT at or above 10000.

SC-5, 11 JUN 2026 to 09 JUL 2026

SC-5, 11 JUN 2026 to 09 JUL 2026