

SC-5, 11 JUN 2026 to 09 JUL 2026

ATIS 118.125  
 CLNC DEL 121.4  
 CLNC DEL 119.25 (when hwr closed)  
 GND CON 121.4  
 SUGARLAND TOWER \* 118.65 (CTAF)  
 HOUSTON DEP CON 123.8 257.7

N



NOTE: RNAV 1.

NOTE: RADAR required.

NOTE: ATC assigned only.

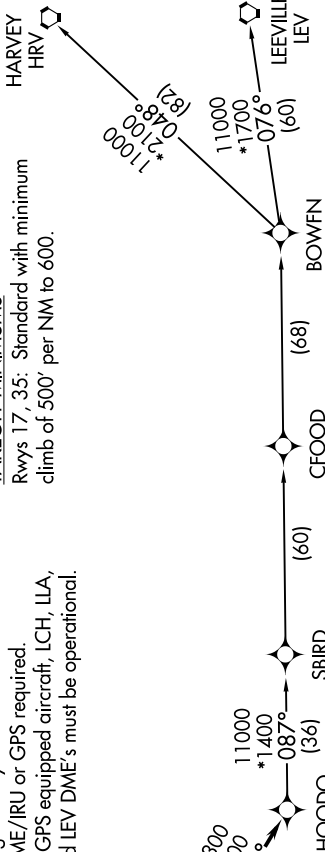
NOTE: DME/DME/IRU or GPS required.

NOTE: For non-GPS equipped aircraft, LCH, ILLA, TBD, and LEV DME's must be operational.

TAKEOFF MINIMUMS

Rwys 17, 35: Standard with minimum climb of 500' per NM to 600.

**TOP ALTITUDE:  
ASSIGNED BY ATC**



NOTE: Chart not to scale.

**DEPARTURE ROUTE DESCRIPTION**

TAKEOFF RUNWAY 17: Climb on heading 170° to 1500, for RADAR vectors to VUH VOR/DME, thence . . . .

TAKEOFF RUNWAY 35: Climb on heading 350° to 1100, for RADAR vectors to VUH VOR/DME, thence . . . .

. . . . on track 118° to HOODO, then on (transition). Maintain ATC assigned altitude. Expect filed altitude 10 minutes after departure.

BOWFN TRANSITION (HOODO7.BOWFN)

CFOOD TRANSITION (HOODO7.CFOOD)

HARVEY TRANSITION (HOODO7.HRV)

LEEVILLE TRANSITION (HOODO7.LEV)

SBIRD TRANSITION (HOODO7.SBIRD)

SC-5, 11 JUN 2026 to 09 JUL 2026