

# LUFKIN FOUR DEPARTURE

HOUSTON, TEXAS

HOUSTON DEP CON  
 123.8 257.7  
 ATIS ★  
 118.125  
 CLNC DEL  
 121.4  
 CLNC DEL  
 119.25 (When twr closed)  
 GND CON  
 121.4  
 SUGAR LAND TOWER ★  
 118.65 (CTAF)

**TOP ALTITUDE:  
 ASSIGNED BY ATC**

LITTLE ROCK  
 115.1 LIT  
 Chan 98

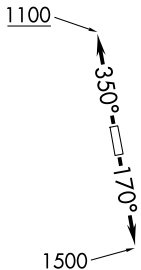
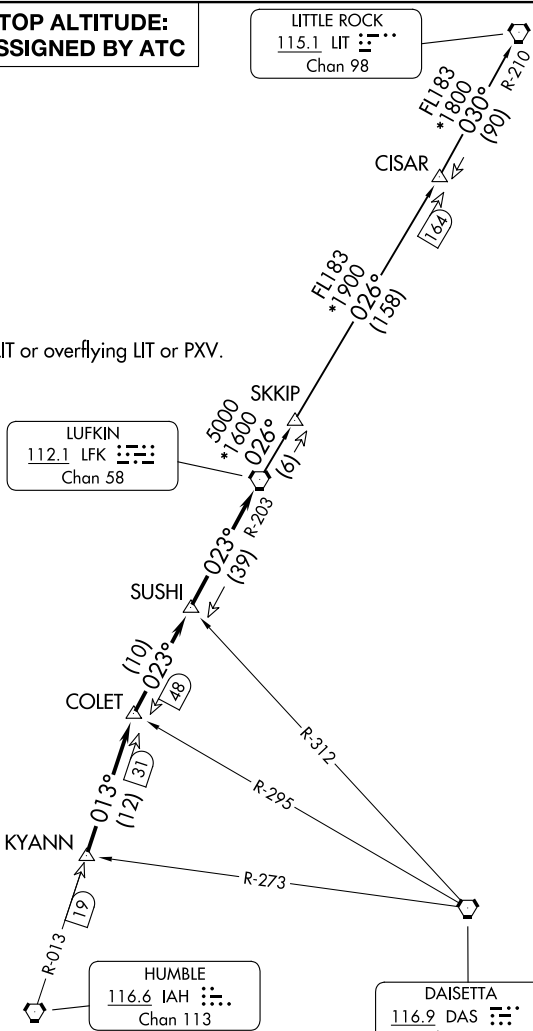
RADAR and DME required.

NOTE: For aircraft destined LIT or overflying LIT or PXV.

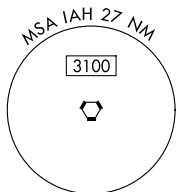
LUFKIN  
 112.1 LFK  
 Chan 58

HUMBLE  
 116.6 IAH  
 Chan 113

DAISETTA  
 116.9 DAS  
 Chan 116



TAKEOFF MINIMUMS  
 Rwy 17, 35: Standard.



NOTE: Chart not to scale.

(CONTINUED ON FOLLOWING PAGE)

SC-5, 11 JUN 2026 to 09 JUL 2026

SC-5, 11 JUN 2026 to 09 JUL 2026

# LUFKIN FOUR DEPARTURE

(LFK4.LFK) 27NOV25

HOUSTON, TEXAS

SUGAR LAND RGNL (SGR)

# LUFKIN FOUR DEPARTURE



## DEPARTURE ROUTE DESCRIPTION

TAKEOFF RUNWAY 17: Climb on heading 170° to 1500 before turning. When entering controlled airspace, climb on assigned heading for RADAR vectors to KYANN INT. Maintain ATC assigned altitude. Expect filed altitude 10 minutes after departure, thence. . .

TAKEOFF RUNWAY 35: Climb on heading 350° to 1100 before turning. When entering controlled airspace, climb on assigned heading for RADAR vectors to KYANN INT. Maintain ATC assigned altitude. Expect filed altitude 10 minutes after departure, thence. . .

. . .on IAH R-013 to COLET INT, then on depicted route to LFK VORTAC.

LITTLE ROCK TRANSITION (LFK4.LIT): From over LFK VORTAC on LFK R-026 to CISAR, then on LIT R-210 to LIT VORTAC.

SC-5, 11 JUN 2026 to 09 JUL 2026

SC-5, 11 JUN 2026 to 09 JUL 2026