

# LURIC EIGHT DEPARTURE (RNAV)

ATIS  
 118.125  
 CLNC DEL  
 121.4  
 CLNC DEL  
 119.25 (when twr closed)  
 GND CON  
 121.4  
 SUGAR LAND TOWER ★  
 118.65 (CTAF)  
 HOUSTON DEP CON  
 123.8 257.7

**TOP ALTITUDE: ASSIGNED BY ATC**

NOTE: RADAR required.  
 NOTE: DME/DME/IRU or GPS required.  
 NOTE: RNAV 1.

### TAKEOFF MINIMUMS

Rwys 17, 35: Standard with minimum  
 climb of 500' per NM to 600.

### DEPARTURE ROUTE DESCRIPTION

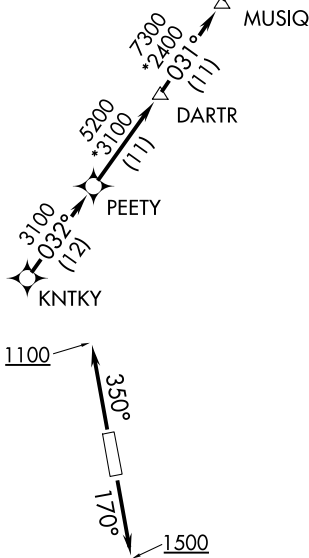
TAKEOFF RWY 17: Climb on heading 170° to 1500  
 for RADAR vectors to KNTKY, thence . . .

TAKEOFF RWY 35: Climb on heading 350° to 1100  
 for RADAR vectors to KNTKY, thence . . .

. . . on track 032° to PEETY, then on track 032° to  
 DARTR, then on track 031° to MUSIQ, then on track  
 031° to CLAVN, then on track 031° to VELCO, then  
 on track 031° to ENJOY, then on track 031° to LURIC,  
 then on (transition). Maintain ATC assigned altitude.  
 Expect filed altitude 10 minutes after departure.

HAWES TRANSITION (LURIC8.HAWES)

ORRTH TRANSITION (LURIC8.ORRTH)



NOTE: Chart not to scale.

SC-5, 11 JUN 2026 to 09 JUL 2026

SC-5, 11 JUN 2026 to 09 JUL 2026