

WAAS CH <b>56219</b> <b>W35A</b>	APP CRS <b>350°</b>	Rwy Ldg <b>6016</b> TDZE <b>78</b> Apt Elev <b>82</b>
--	------------------------	---

# RNAV (GPS) RWY 35

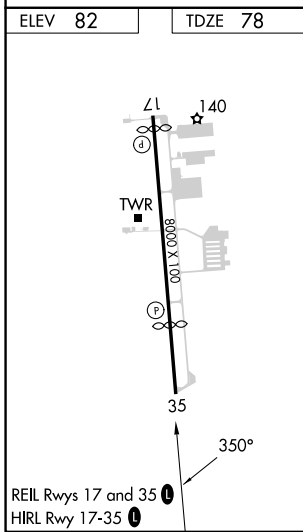
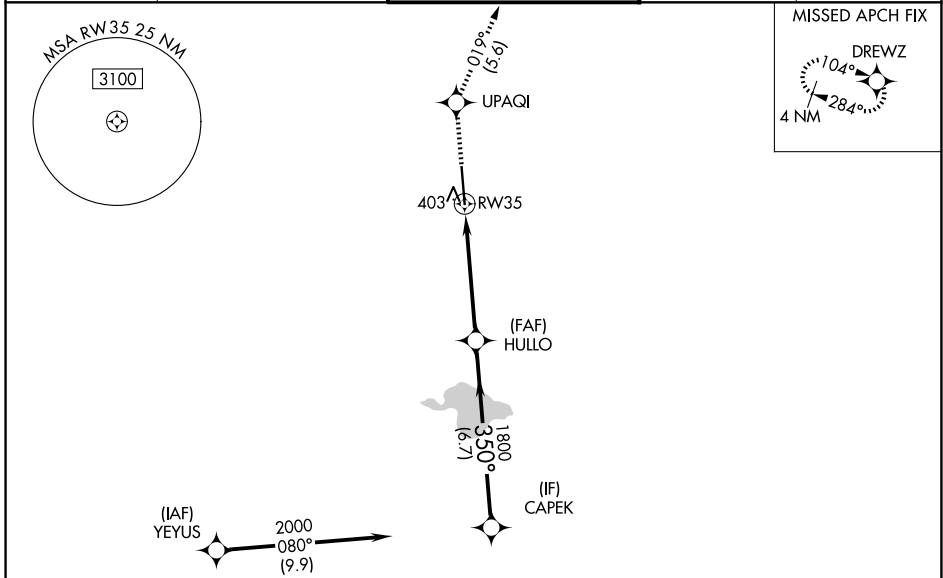
SUGAR LAND RGNL (SGR)

**RNP APCH.**

**⚠** For uncompensated Baro-VNAV systems, LNAV/VNAV NA below -15°C (5°F) or above 43°C (109°F). Baro-VNAV and VDP NA when using William P Hobby altimeter setting. When local altimeter setting not received, use William P Hobby altimeter setting: increase all DA 51 feet; increase all MDA 60 feet and increase LNAV-VNAV all Cats visibility to 1¾, LNAV Cat C/D visibility to 1⅞, and Circling Cat C visibility to 2, Cat D to 2¼. When VGSI inop., Circling Rwy 17 NA at night.

**MISSED APPROACH:** Climb to 2000 direct UPAQI and on track 019° to DREWZ and hold.

ATIS <b>118.125</b>	HOUSTON APP CON <b>123.8 257.7</b>	SUGAR LAND TOWER ★ <b>118.65 (CTAF) 0</b>	GND CON <b>121.4</b>	UNICOM <b>122.95</b>
------------------------	---------------------------------------	--	-------------------------	-------------------------



**RADAR REQUIRED**

2000	UPAQI	tr 019°	DREWZ	CAPEK
* LNAV only.				
* 1.7 NM to RW35				
<div style="display: flex; justify-content: space-around;"> <span>1.7</span> <span>3.5 NM</span> <span>6.7 NM</span> </div>				
2000	HULLO 1800	350°	2000	GP 3.00° TCH 56
CATEGORY	A	B	C	D
LPV DA	278-¾ 200 (200-¾)			
LNAV/VNAV DA	567-1⅝ 489 (500-1⅞)			
LNAV MDA	660-1	582 (600-1)	660-1¾	582 (600-1¾)
CIRCLING	720-1	638 (700-1)	720-1¾ 638 (700-1¾)	720-2 638 (700-2)

SC-5, 11 JUN 2026 to 09 JUL 2026

SC-5, 11 JUN 2026 to 09 JUL 2026