

WAAS CH 90441 W32A	APP CRS 316°	Rwy Ldg TDZE Apt Elev	3650 1245 1245
--	------------------------	-----------------------------	---

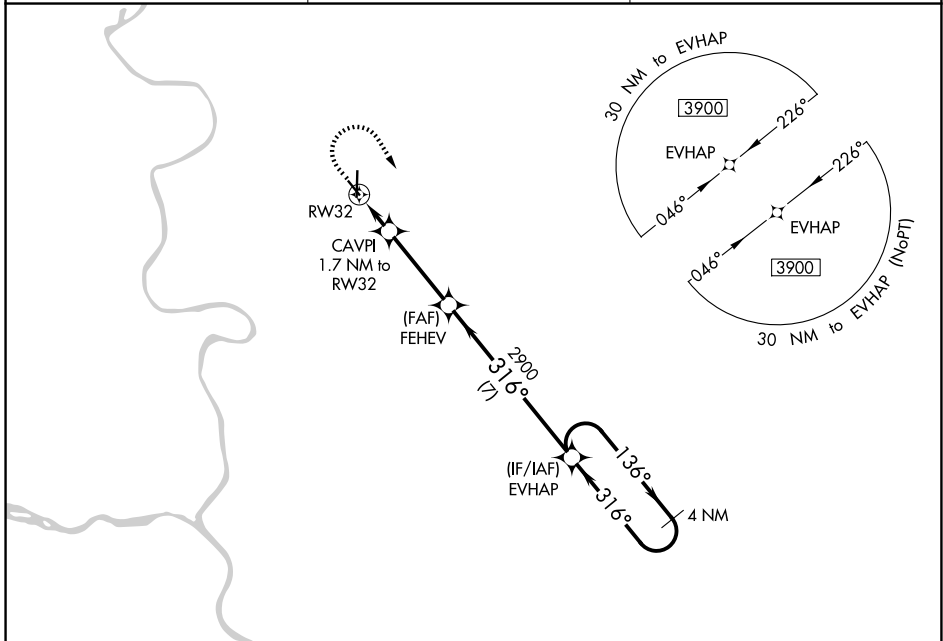
RNAV (GPS) RWY 32

COUNCIL BLUFFS MUNI (CBF)

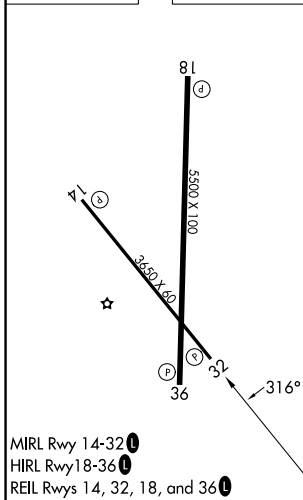
For uncompensated Baro-VNAV systems, LNAV/VNAV NA below -18°C (0°F) or above 54°C (130°F). DME/DME RNP- 0.3 NA.

MISSED APPROACH: Climb to 2000 then climbing right turn to 3900 direct EVHAP and hold.

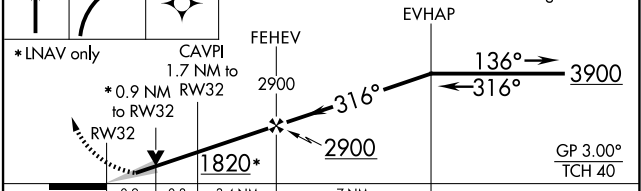
AWOS-3 126.575	OMAHA APP CON 124.5 263.0	UNICOM 122.725 (CTAF)
--------------------------	-------------------------------------	---------------------------------



ELEV 1245	TDZE 1245
-----------	-----------



2000 3900 EVHAP VGSI and RNAV glidepath not coincident (VGSI Angle 3.50/TCH 30) 4 NM Holding Pattern



CATEGORY	A	B	C	D
LPV DA		1445-3/4	200 (200-3/4)	
LNAV/VNAV DA		1495-3/4	250 (300-3/4)	
LNAV MDA		1620-1	375 (400-1)	
CIRCLING	1780-1	535 (600-1)	1780-1 1/2 535 (600-1 1/2)	1880-2 635 (700-2)

NC-3, 11 JUN 2026 to 09 JUL 2026

NC-3, 11 JUN 2026 to 09 JUL 2026