

WAAS CH <b>97525</b> <b>W31A</b>	APP CRS <b>313°</b>	Rwy Ldg TDZE <b>725</b> Apt Elev <b>727</b>	<b>4501</b>
----------------------------------------	------------------------	---------------------------------------------------	-------------

# RNAV (GPS) RWY 31

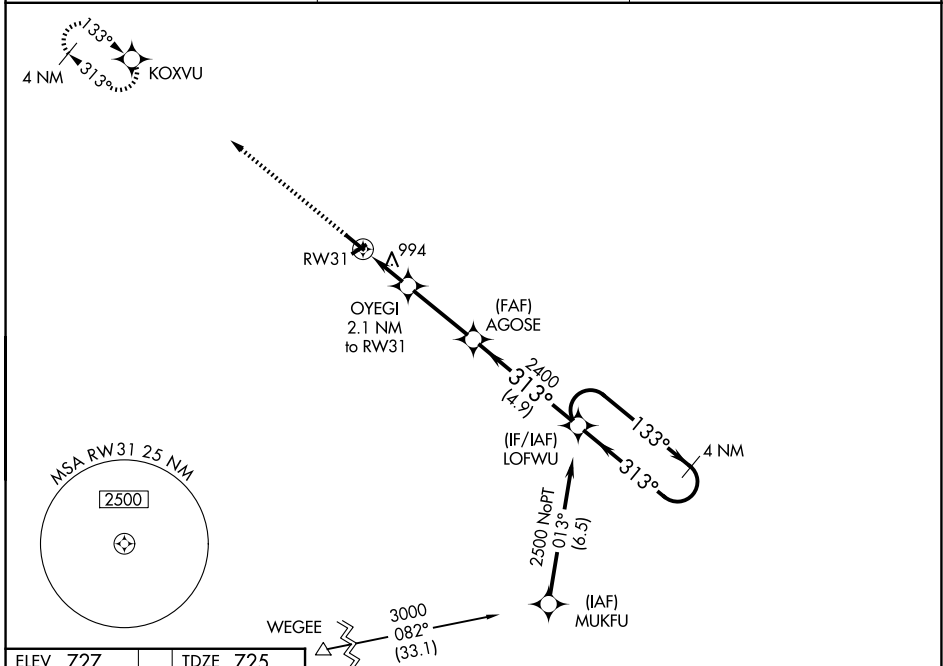
VIRGIL I GRISSOM MUNI (BFR)

RNP APCH - GPS.

**▼** When local altimeter setting not received, use BMG altimeter setting and increase all MDAs 80 feet and LNAV visibility Cat C/D ¼ SM, and LP visibility Cat C/D ¼ SM, and Circling visibility Cat C/D ¼ SM. Procedure NA at night. Rwy 31 helicopter visibility reduction below 1 SM NA.

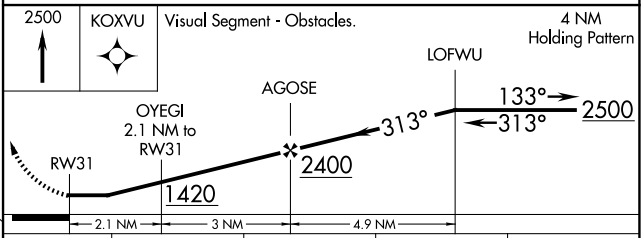
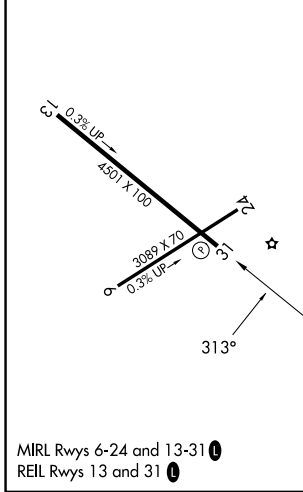
**▲** MISSED APPROACH: Climb to 2500 direct KOXVU and hold.

AWOS-3PT <b>119.125</b>	LOUISVILLE APP CON <b>123.675 327.0</b>	UNICOM <b>122.8 (CTAF) 0</b>
----------------------------	--------------------------------------------	---------------------------------



ELEV 727	TDZE 725
----------	----------

Procedure NA for arrivals at WEWEE on V305 southwest bound.



CATEGORY	A	B	C	D
LP MDA	1260-1	535 (600-1)	1260-1½	535 (600-1½)
LNAV MDA	1260-1	535 (600-1)	1260-1½	535 (600-1½)
CIRCLING	1300-1	573 (600-1)	1380-1¾ 653 (700-1¾)	1380-2 653 (700-2)

EC-2, 11 JUN 2026 to 09 JUL 2026

EC-2, 11 JUN 2026 to 09 JUL 2026