

| | | | |
|--|------------------------|-----------------------------|---|
| WAAS CH 40421 W23A | APP CRS 233° | Rwy Ldg TDZE Apt Elev | 5718 1292 1313 |
|--|------------------------|-----------------------------|---|

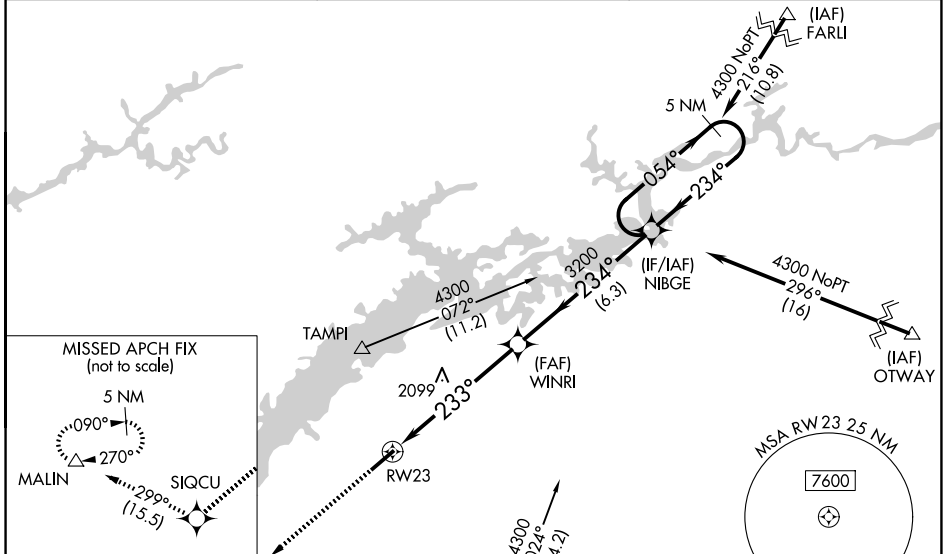
RNAV (GPS) RWY 23

MOORE-MURRELL (MOR)

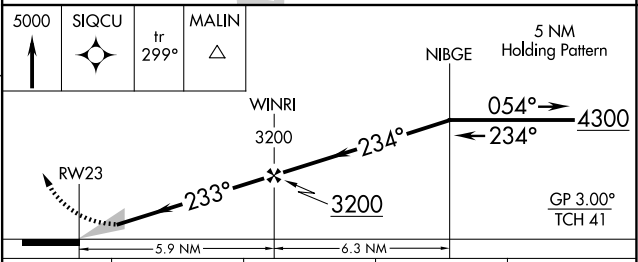
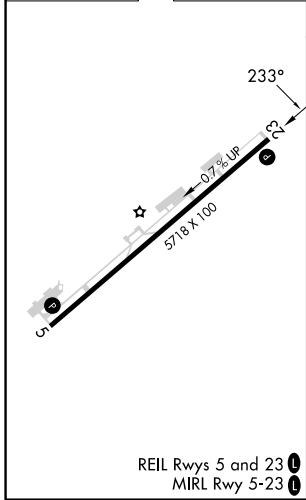
▽ Baro-VNAV NA when using Mc Ghee Tyson altimeter setting. For uncompensated Baro-VNAV systems, LNAV/VNAV NA below -17°C (2°F) or above 35°C (95°F).
△ NA DME/DME RNP-0.3 NA. When local altimeter setting not received, use Mc Ghee Tyson altimeter setting and increase all DA 133 feet and all MDA 140 feet, increase LPV all Cats visibility to 1½ miles, LNAV/VNAV all Cats visibility to 5 miles, LNAV and Circling Cat B visibility to 1½ miles and LNAV Cats C and D and Circling Cat C visibility to 3 miles.

MISSED APPROACH:
Climb to 5000 direct SIQCU and on track 299° to MALIN and hold.

| | | |
|--------------------------|---|---------------------------------|
| AWOS-3 126.725 | KNOXVILLE APP CON 132.8 360.8 | UNICOM 122.8 (CTAF) 0 |
|--------------------------|---|---------------------------------|



| | |
|-----------|-----------|
| ELEV 1313 | TDZE 1292 |
|-----------|-----------|



| | A | B | C | D |
|--------------|----------------------|----------------------|----------------------|---|
| LPV DA | 1589-1 297 (300-1) | | | |
| LNAV/VNAV DA | 2387-4 1095 (1100-4) | | | |
| LNAV MDA | 2200-1¼ 908 (900-1¼) | 2200-2½ 908 (900-2½) | | |
| CIRCLING | 2200-1¼ 887 (900-1¼) | 2200-2¾ 887 (900-2¾) | 2420-3 1107 (1200-3) | |

SE-1, 11 JUN 2026 to 09 JUL 2026

SE-1, 11 JUN 2026 to 09 JUL 2026