

WAAS CH 70340 W36A	APP CRS 358°	Rwy Ldg TDZE Apt Elev	5001 617 622
--	------------------------	-----------------------------	---

RNAV (GPS) RWY 36

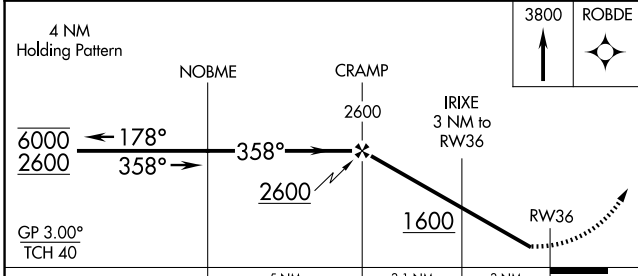
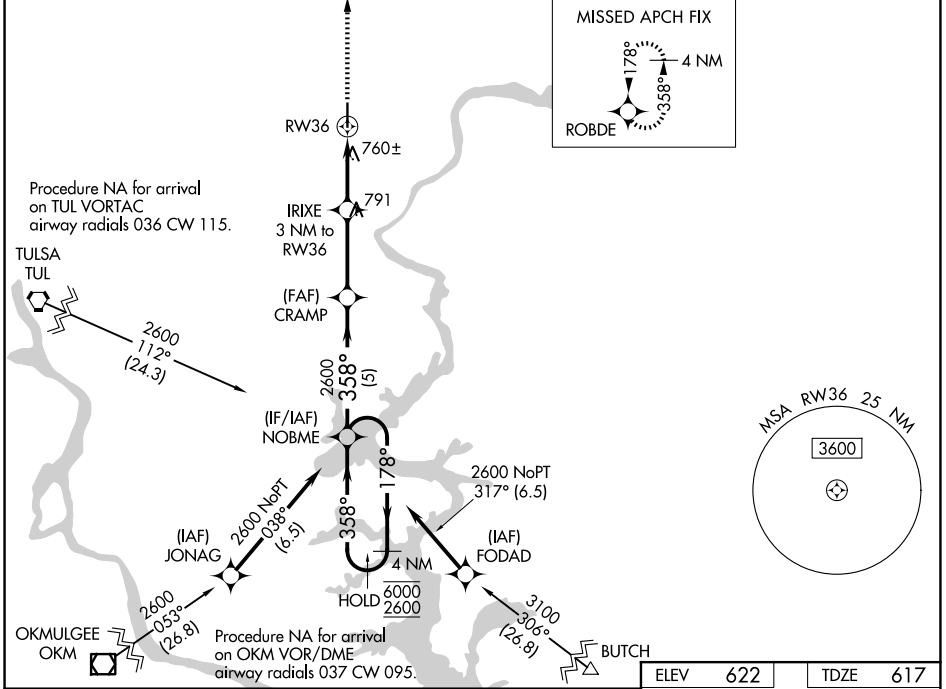
MID-AMERICA INDUSTRIAL (H71)

RNP APCH - GPS.

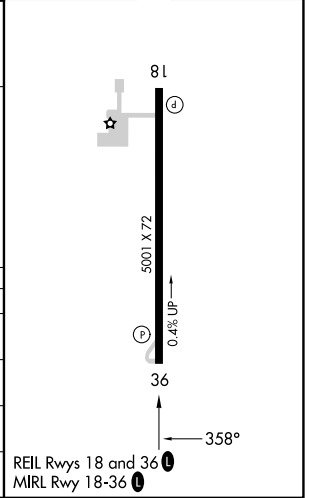
▼ Rwy 36 helicopter visibility reduction below 1 SM NA. For uncompensated Baro-VNAV systems, LNAV/VNAV NA below -1.6°C or above 54°C. Procedure NA at night.

MISSED APPROACH: Climb to 3800 direct ROBDE and hold, continue climb-in-hold to 3800.

AWOS 3-PT 120.1	TUL ASOS 124.9 377.2	TULSA APP CON 119.1 360.825	UNICOM 122.8 (CTAF) ①
---------------------------	--------------------------------	---------------------------------------	---------------------------------



CATEGORY	A	B	C	D
LPV DA	938-1 $\frac{1}{8}$ 321 (400-1 $\frac{1}{8}$)			
LNAV/VNAV DA	1131-1 $\frac{1}{8}$		514 (600-1 $\frac{1}{8}$)	
LNAV MDA	1100-1	483 (500-1)	1100-1 $\frac{3}{8}$	483 (500-1 $\frac{1}{8}$)
CIRCLING	1200-1	578 (600-1)	1560-2 $\frac{3}{4}$ 938 (1000-2 $\frac{3}{4}$)	1560-3 938 (1000-3)



SC-1, 11 JUN 2026 to 09 JUL 2026

SC-1, 11 JUN 2026 to 09 JUL 2026