

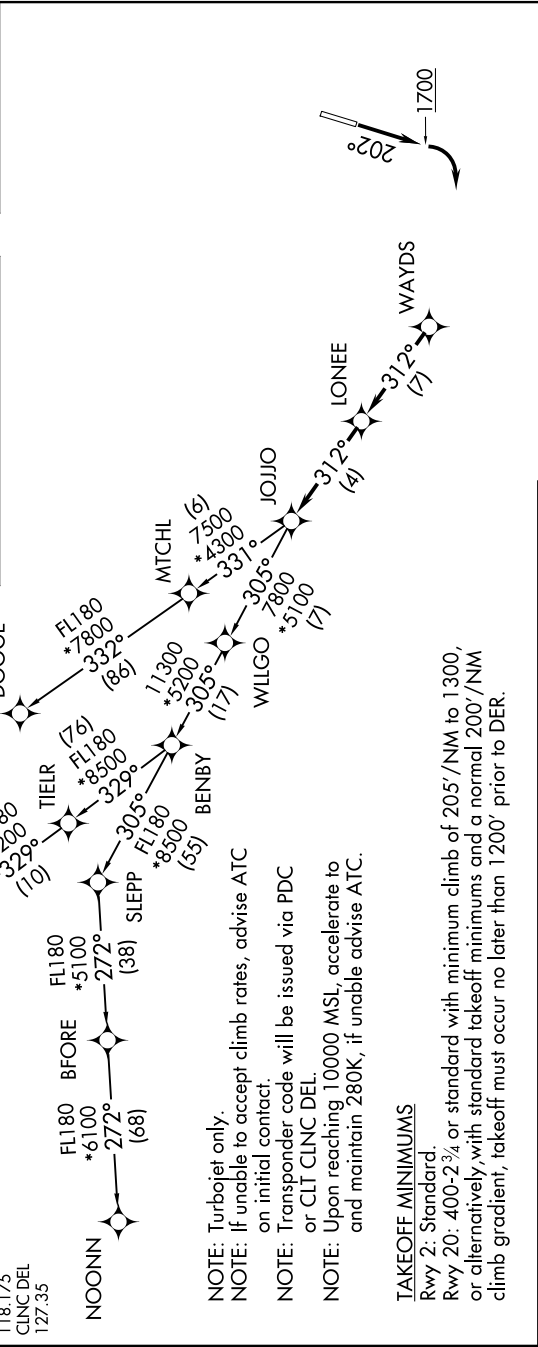
JOJJO SIX DEPARTURE (RNAV)

SE-2, 11 JUN 2026 to 09 JUL 2026

TOP ALTITUDE:
3000

RNAV 1 - DME/DME/IRU or GPS.
RADAR required.

CHARLOTTE DEP CON
128.325 307.8
AWOS-3P
118.175
CLNC DEL
127.35



- NOTE: Turbojet only.
- NOTE: If unable to accept climb rates, advise ATC on initial contact.
- NOTE: Transponder code will be issued via PDC or CLT CLNC DEL.
- NOTE: Upon reaching 10000 MSL, accelerate to and maintain 280K, if unable advise ATC.

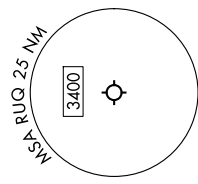
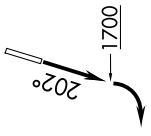
TAKEOFF MINIMUMS

- Rwy 2: Standard.
- Rwy 20: 400-2/4 or standard with minimum climb of 205'/NM to 1300, or alternatively, with standard takeoff minimums and a normal 200'/NM climb gradient, takeoff must occur no later than 1200' prior to DER.

DEPARTURE ROUTE DESCRIPTION

- TAKEOFF RUNWAY 2:** Climb on heading assigned by ATC, thence. . .
- TAKEOFF RUNWAY 20:** Climb on heading 20° to 1700 before turning right, then on heading assigned by ATC, thence. . .
- . . . for RADAR vectors to WAYDS, then on depicted route to JOJJO. Then on assigned transition. Maintain 3000, expect filed altitude 10 minutes after departure.

- CUBIM TRANSITION (JOJJO6.CUBIM)
- DOOGE TRANSITION (JOJJO6.DOOGE)
- NOONN TRANSITION (JOJJO6.NOONN)



NOTE: Chart not to scale.

SE-2, 11 JUN 2026 to 09 JUL 2026