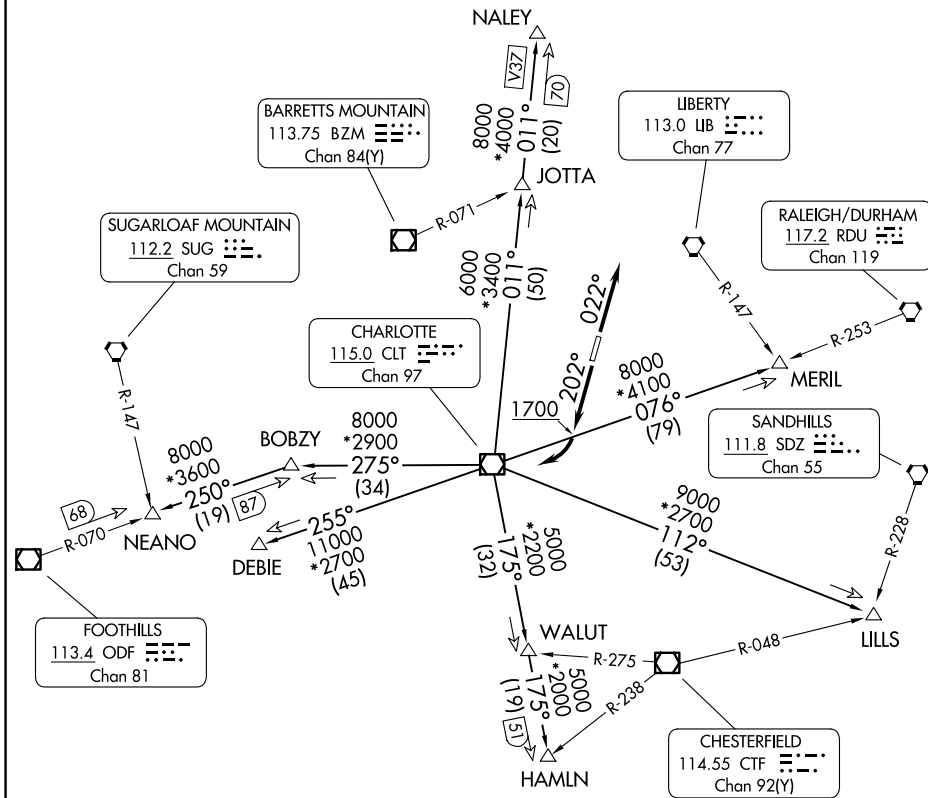


# KERMIT FIVE DEPARTURE

CHARLOTTE DEP CON  
128.325 307.8  
AWOS-3P  
118.175  
CLNC DEL  
127.35

RADAR and DME required.

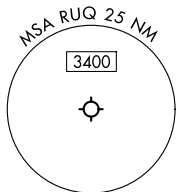
**TOP ALTITUDE:  
3000**



- NOTE: Turbojets only.
- NOTE: Upon reaching 10000 MSL, accelerate to and maintain 280K, if unable advise ATC.
- NOTE: Transponder code will be issued via Charlotte clearance delivery.

### TAKEOFF MINIMUMS

Rwy 2: Standard.  
 Rwy 20: 400-2¾ or standard with minimum climb of 205'/NM to 1300, or alternatively, with standard takeoff minimums and a normal 200'/NM climb gradient, takeoff must occur no later than 1200' prior to DER.



NOTE: Chart not to scale.

(CONTINUED ON FOLLOWING PAGE)

# KERMIT FIVE DEPARTURE

(KER5.KER) 14MAY26

SALISBURY, NORTH CAROLINA  
MID-CAROLINA RGNL (RUQ)

SE-2, 11 JUN 2026 to 09 JUL 2026

SE-2, 11 JUN 2026 to 09 JUL 2026

# KERMIT FIVE DEPARTURE



## DEPARTURE ROUTE DESCRIPTION

TAKEOFF RUNWAY 2: Climb on heading 022°, thence. . .

TAKEOFF RUNWAY 20: Climb on heading 202° to 1700 before turning right, thence. . .

. . .on RADAR vectors to intercept filed/assigned transition or enroute fix/navaid.

Maintain 3000, expect filed altitude 10 minutes after departure.

DEBIE TRANSITION (KER5.DEBIE): From over CLT VOR/DME on CLT R-255 to DEBIE.

HAMLN TRANSITION (KER5.HAMLN): From over CLT VOR/DME on CLT R-175 to HAMLN.

JOTTA TRANSITION (KER5.JOTTA): From over CLT VOR/DME on CLT R-011 to JOTTA.

LILLS TRANSITION (KER5.LILLS): From over CLT VOR/DME on CLT R-112 to LILLS.

MERIL TRANSITION (KER5.MERIL): From over CLT VOR/DME on CLT R-076 to MERIL.

NALEY TRANSITION (KER5.NALEY): From over CLT VOR/DME on CLT R-011 to NALEY.

NEANO TRANSITION (KER5.NEANO): From over CLT VOR/DME on CLT R-275 to BOBZY,  
then on ODF R-070 to NEANO.

SE-2, 11 JUN 2026 to 09 JUL 2026

SE-2, 11 JUN 2026 to 09 JUL 2026