

# KRITR SEVEN DEPARTURE (RNAV)

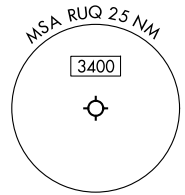
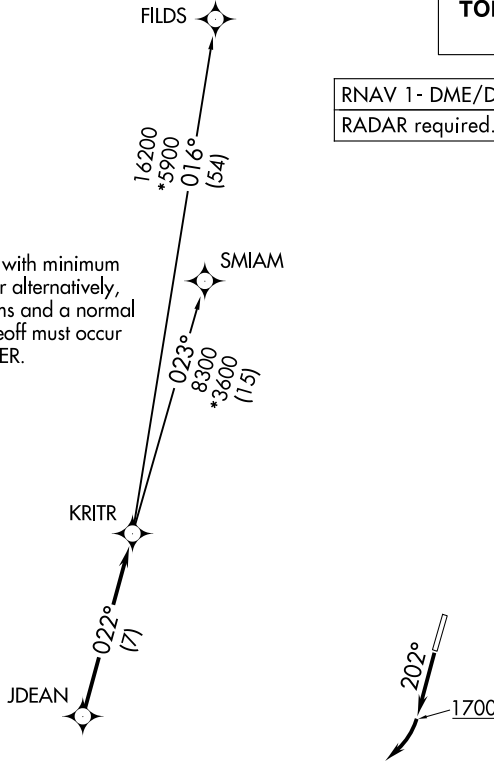
CHARLOTTE DEP CON  
128.325 307.8  
AWOS-3P  
118.175  
CLNC DEL  
127.35

**TOP ALTITUDE:  
3000**

RNAV 1 - DME/DME/IRU or GPS.  
RADAR required.

### TAKEOFF MINIMUMS

Rwy 2: Standard.  
Rwy 20: 400-2¾ or standard with minimum climb of 205'/NM to 1300, or alternatively, with standard takeoff minimums and a normal 200'/NM climb gradient, takeoff must occur no later than 1200' prior to DER.



- NOTE: Turbojet only.
- NOTE: Transponder code will be issued via PDC or CLT CLNC DEL.
- NOTE: If unable to accept climb rates, advise ATC on initial contact.
- NOTE: Upon reaching 10000 MSL, accelerate to and maintain 280K, if unable advise ATC.

NOTE: Chart not to scale.

### DEPARTURE ROUTE DESCRIPTION

TAKEOFF RUNWAY 2: Climb on heading assigned by ATC, thence. . .

TAKEOFF RUNWAY 20: Climb on heading 202° to 1700 before turning right, then on heading assigned by ATC, thence. . .

. . . for RADAR vectors to JDEAN, then on track 022° to KRITR, then on assigned transition. Maintain 3000. Expect filed altitude 10 minutes after departure.

- FILDS TRANSITION (KRITR7.FILDS)
- SMIAM TRANSITION (KRITR7.SMIAM)

# KRITR SEVEN DEPARTURE (RNAV)

SE-2, 11 JUN 2026 to 09 JUL 2026

SE-2, 11 JUN 2026 to 09 JUL 2026