

(KWEEN6.KWEEN) 26134

AL-5551 (FAA)

MID-CAROLINA RGNL (RUQ)  
SALISBURY, NORTH CAROLINA

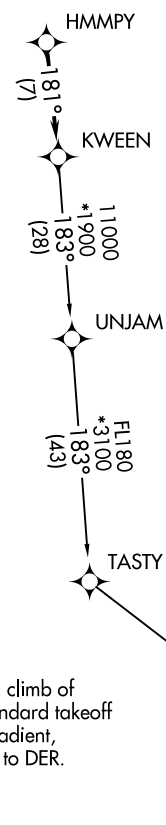
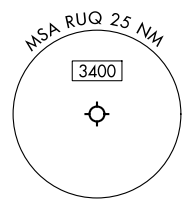
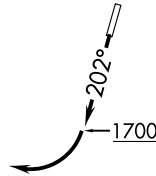
# KWEEN SIX DEPARTURE (RNAV)

CHARLOTTE DEP CON  
128.325 307.8  
AWOS-3P  
118.175  
CLNC DEL  
127.35

**TOP ALTITUDE:  
3000**

RNAV 1 - DME/DME/IRU or GPS.

RADAR required.



- NOTE: Turbojet only.
- NOTE: Transponder code will be issued via PDC or CLT CLNC DEL.
- NOTE: If unable to accept climb rates, advise ATC on initial contact.
- NOTE: Upon reaching 10000 MSL, accelerate to and maintain 280K, if unable advise ATC.

### TAKEOFF MINIMUMS

Rwy 2: Standard.  
 Rwy 20: 400-2<sup>3</sup>/<sub>4</sub> or standard with minimum climb of 205' /NM to 1300, or alternatively, with standard takeoff minimums and a normal 200' /NM climb gradient, takeoff must occur no later than 1200' prior to DER.

NOTE: Chart not to scale.

### DEPARTURE ROUTE DESCRIPTION

**TAKEOFF RUNWAY 2:** Climb on heading assigned by ATC, thence. . .  
**TAKEOFF RUNWAY 20:** Climb on heading 202° to 1700 before turning right, then on heading assigned by ATC, thence. . .

. . .for RADAR vectors to HMMPY, then on track 181° to KWEEN. Then on assigned transition. Maintain 3000, expect filed altitude 10 minutes after departure.

PITRW TRANSITION (KWEEN6.PITRW)  
UNJAM TRANSITION (KWEEN6.UNJAM)

**KWEEN SIX DEPARTURE (RNAV)**  
 (KWEEN6.KWEEN) 14MAY26

SALISBURY, NORTH CAROLINA  
 MID-CAROLINA RGNL (RUQ)

SE-2, 11 JUN 2026 to 09 JUL 2026

SE-2, 11 JUN 2026 to 09 JUL 2026