

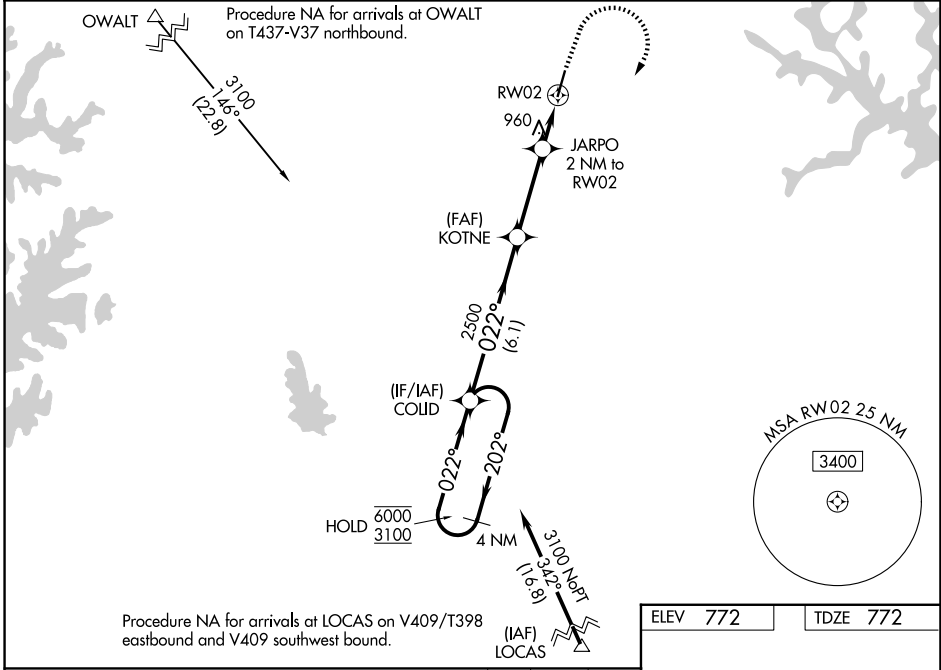
WAAS CH 40321 W02A	APP CRS 022°	Rwy Ldg TDZE Apt Elev	5375 772 772
--	------------------------	-----------------------------	---

RNAV (GPS) RWY 2

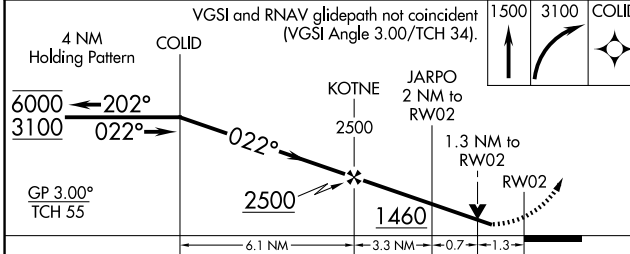
MID-CAROLINA RGNL (RUQ)

RNP APCH - GPS.		MISSED APPROACH: Climb to 1500 then climbing right turn to 3100 direct COLID and hold.
Rwy 2 helicopter visibility reduction below ¾ SM NA. For uncompensated Baro-VNAV systems, LNAV/VNAV NA below -16°C or above 54°C.		

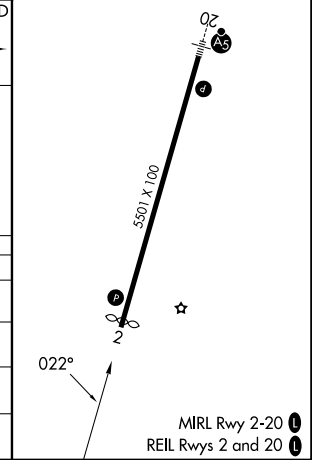
AWOS-3P 118.175	CHARLOTTE APP CON 128.325 307.8	UNICOM 122.725 (CTAF) 0
---------------------------	---	--



ELEV 772	TDZE 772
-----------------	-----------------



CATEGORY	A	B	C	D
LPV DA		1138-1	366 (400-1)	
LNAV/VNAV DA		1181-1½	409 (500-1½)	
LNAV MDA	1220-1	448 (500-1)	1220-1¾	448 (500-1¾)
CIRCLING	1240-1	1260-1	1440-1¾	1440-2
	468 (500-1)	488 (500-1)	668 (700-1¾)	668 (700-2)



SE-2, 11 JUN 2026 to 09 JUL 2026

SE-2, 11 JUN 2026 to 09 JUL 2026