

MILLERSBURG, OHIO

AL-5561 (FAA)

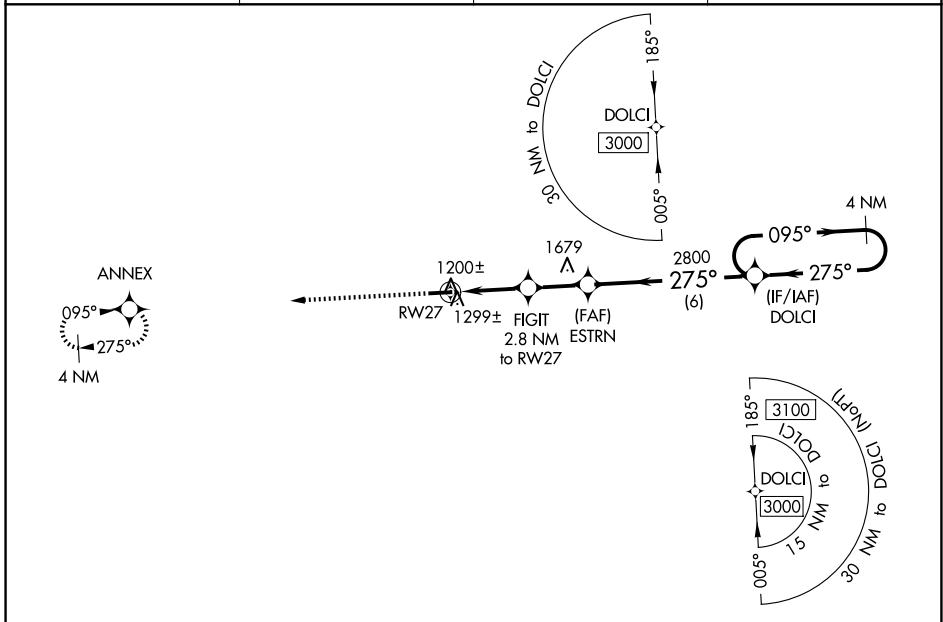
26078

WAAS CH <b>57937</b> <b>W27A</b>	APP CRS <b>275°</b>	Rwy Ldg TDZE <b>1215</b> Apt Elev <b>1227</b>
--	------------------------	---

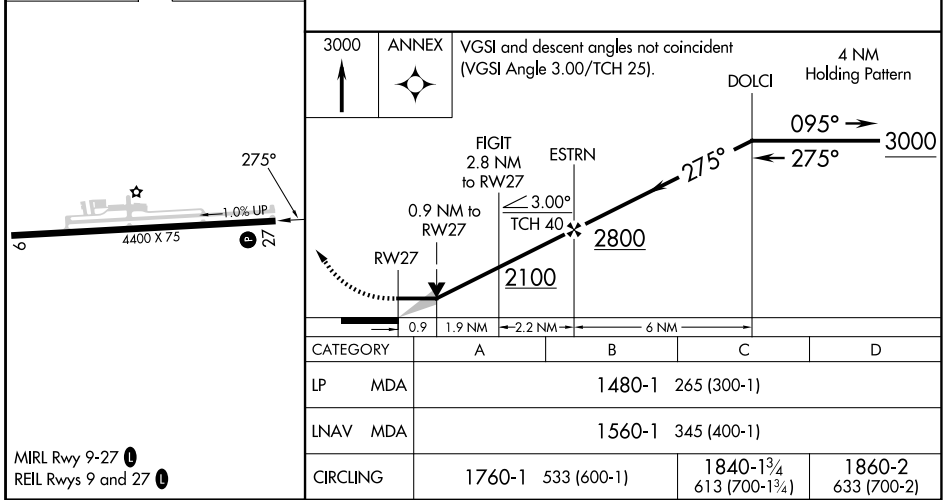
# RNAV (GPS) RWY 27

HOLMES COUNTY (10G)

RNP APCH - GPS.			MISSED APPROACH: Climb to 3000 direct ANNEX and hold.
AWOS-3 <b>128.325</b>	INDIANAPOLIS CENTER <b>124.45 323.275</b>	UNICOM <b>123.0 (CTAF)</b>	



ELEV 1227	TDZE 1215
-----------	-----------



MILLERSBURG, OHIO  
Orig-C 29DEC22

40°32'N-81°57'W

# HOLMES COUNTY (10G) RNAV (GPS) RWY 27

EC-2, 11 JUN 2026 to 09 JUL 2026

EC-2, 11 JUN 2026 to 09 JUL 2026