

(BRSTL1.BRSTL) 23222

AL-5570 (FAA)

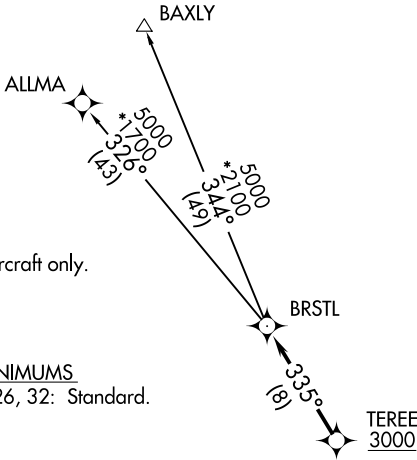
JACKSONVILLE INTL (JAX)  
JACKSONVILLE, FLORIDA

# BRSTL ONE DEPARTURE (RNAV)

**TOP ALTITUDE:**  
**3000**

RNAV 1 - DME/DME/IRU or GPS.  
RADAR required.

JACKSONVILLE DEP CON  
127.0 292.15  
D-ATIS  
125.85  
CLNC DEL  
119.5 290.275  
GND CON  
121.9 348.6  
JACKSONVILLE TOWER  
118.3 317.7

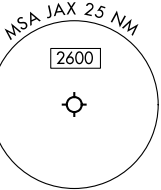


NOTE: Jet aircraft only.

TAKEOFF MINIMUMS

Rwys 8, 14, 26, 32: Standard.

TEREE  
3000



JACKSONVILLE EXEC  
AT CRAIG

NOTE: Chart not to scale.

## DEPARTURE ROUTE DESCRIPTION

TAKEOFF ALL RUNWAYS: Climb on assigned heading for RADAR vectors to cross TERE at or above 3000 then on track 335° to BRSTL, then on (transition). Maintain 3000. Expect filed altitude 10 minutes after departure.

ALL AIRCRAFT: ATC CLIMB GRADIENT: If unable to accept climb rate, advise ATC prior to taxi.  
Rwy 14: 400'/NM to 430.

ALLMA TRANSITION (BRSTL1.ALLMA)

BAXLY TRANSITION (BRSTL1.BAXLY)

# BRSTL ONE DEPARTURE (RNAV)

(BRSTL1.BRSTL) 10AUG23

JACKSONVILLE, FLORIDA  
JACKSONVILLE INTL (JAX)

SE-3, 11 JUN 2026 to 09 JUL 2026

SE-3, 11 JUN 2026 to 09 JUL 2026