

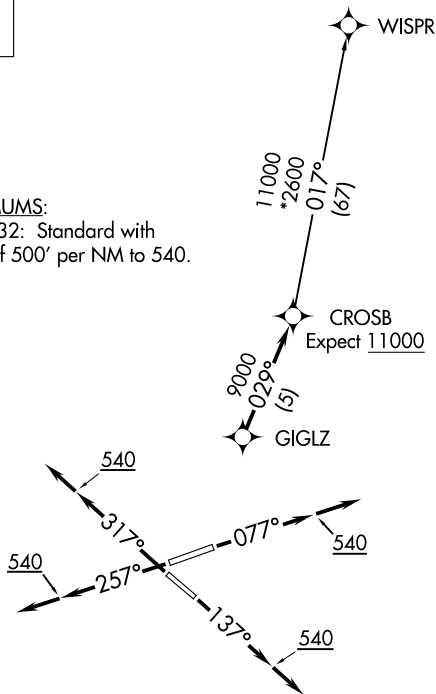
# CROSB TWO DEPARTURE (RNAV)

**TOP ALTITUDE:**  
**3000**

D-ATIS  
125.85  
CLNC DEL  
119.5 290.275  
CPDLC  
GND CON  
121.9 348.6  
JACKSONVILLE TOWER  
118.3 317.7  
JACKSONVILLE DEP CON  
127.0 292.15

**TAKEOFF MINIMUMS:**

Rwys 8, 14, 26, 32: Standard with minimum climb of 500' per NM to 540.



- NOTE: RNAV 1.
- NOTE: Turbojets only.
- NOTE: DME/DME/IRU or GPS required.
- NOTE: RADAR required.
- NOTE: If unable to accept climb rate, advise ATC on initial contact.

NOTE: Chart not to scale.

## DEPARTURE ROUTE DESCRIPTION

**TAKEOFF RUNWAY 8:** Climb heading 077° to 540, then climb to assigned altitude on heading 077° or as assigned by ATC, Thence. . . .

**TAKEOFF RUNWAY 14:** Climb heading 137° to 540, then climb to assigned altitude on heading 137° or as assigned by ATC, Thence. . . .

**TAKEOFF RUNWAY 26:** Climb heading 257° to 540, then climb to assigned altitude on heading 257° or as assigned by ATC, Thence. . . .

**TAKEOFF RUNWAY 32:** Climb heading 317° to 540, then climb to assigned altitude on heading 317° or as assigned by ATC, Thence. . . .

. . . .expect radar vectors to GIGLZ, then on track 029° to CROSB. Maintain 3000 or as assigned by ATC, expect clearance to filed altitude within ten (10) minutes after departure.

**WISPR TRANSITION (CROSB2.WISPR):**

# CROSB TWO DEPARTURE (RNAV)