

HI-TACAN RWY 14

VORTAC CRG 114.5 Chan 92	APCH CRS 136°	Rwy Ildg 7701 TDZE 27 Arpt Elev 30
--	-------------------------	---

[USAF]

JACKSONVILLE INTL (KJAX)

DME required. RADAR required for procedure entry.

MALSR

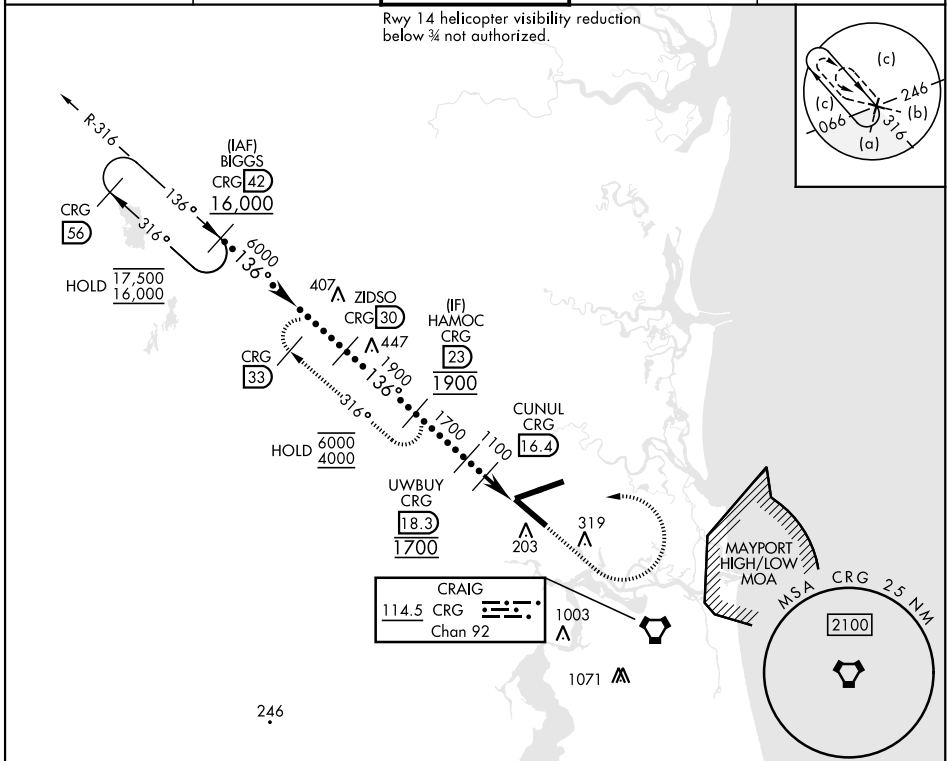
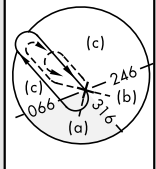
MISSED APPROACH: Climb to 2000 then climbing left turn to 4000 on CRG VORTAC R-316 to HAMOC 23 DME and hold.

* When ALS inop, increase vis to 1 mile.



ATIS 125.85	APP CON 119.0 269.9	TOWER 118.3 317.7	GND CON 121.9 348.6	CLNC DEL 119.5 290.275
-----------------------	-------------------------------	-----------------------------	-------------------------------	----------------------------------

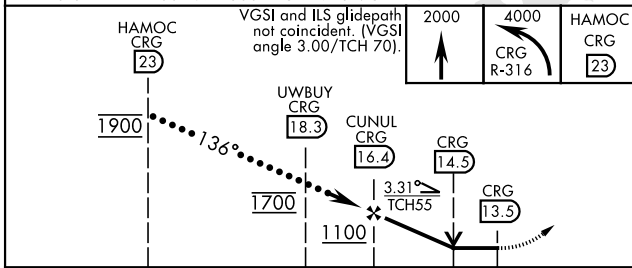
Rwy 14 helicopter visibility reduction below 3/4 not authorized.



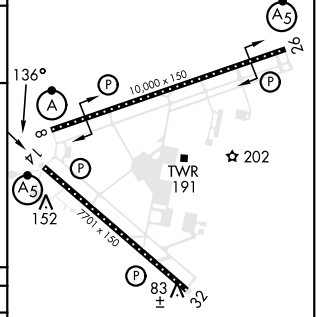
SE-3, 11 JUN 2026 to 09 JUL 2026

SE-3, 11 JUN 2026 to 09 JUL 2026

EMERG SAFE ALT 100 NM 2800 FROM CRG VORTAC



ELEV 30	TDZE 27
---------	---------



CATEGORY	C	D	E
S-14*	400-3/4	373 (400-3/4)	
CIRCLING	580-1 1/2 550 (600-1 1/2)	580-2 550 (600-2)	760-2 1/2 730 (800-2 1/2)

HIRL Rwy 8-26, 14-32
REIL Rwy 32
TDZL/CL Rwy 8, 14, 26

HI-TACAN RWY 14