

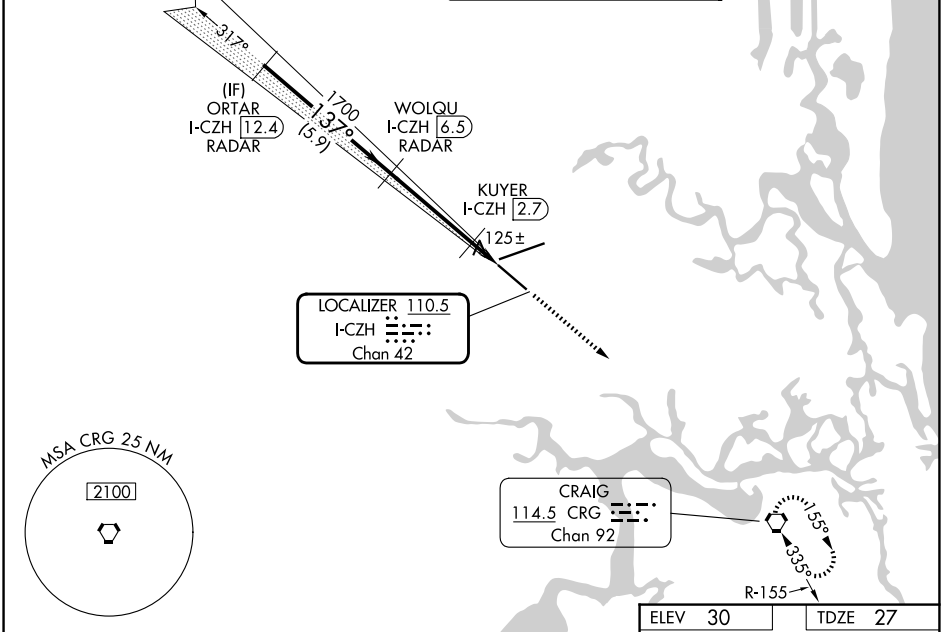
LOC/DME I-CZH 110.5 Chan 42	APP CRS 137°	Rwy Ldg 7701 TDZE 27 Apt Elev 30
---	------------------------	---

ILS Y or LOC Y RWY 14

JACKSONVILLE INTL (JAX)

RADAR required for procedure entry. DME or RADAR required.		MALSR	MISSED APPROACH: Climb to 3000 direct CRG VORTAC and hold.
<p>▼ Rwy 14 helicopter visibility reduction below 3/4 SM NA. Autopilot coupled approach NA below 750 feet MSL. For inop ALS, increase S-LOC 14 Cats A/B visibility to 1 SM. KUYER fix minimums: for inop ALS, increase S-LOC 14 all Cats visibility to 1 SM.</p>			

D-ATIS 125.85	JACKSONVILLE APP CON 119.0 269.9	JACKSONVILLE TOWER 118.3 317.7	GND CON 121.9 348.6
-------------------------	--	--	-------------------------------



ELEV 30		TDZE 27		
<p>ORTAR I-CZH 12.4 RADAR</p> <p>WOLQU I-CZH 6.5 RADAR</p> <p>KUYER I-CZH 2.7</p> <p>I-CZH 1.4</p> <p>3000 CRG </p> <p>GS 3.00° TCH 54</p> <p>5.9 NM 3.8 NM 1.3 NM</p>		<p>VGSI and ILS glidepath not coincident (VGSI Angle 3.00/TCH 70).</p>		
CATEGORY	A	B	C	D
S-ILS 14	306-3/4 279 (300-3/4)			
S-LOC 14	480-3/4 453 (500-3/4)		480-7/8 453 (500-7/8)	
CIRCLING	520-1 490 (500-1)		600-1 1/2 570 (600-1 1/2) 600-2 570 (600-2)	
KUYER FIX MINIMUMS (DME REQUIRED)				
S-LOC 14	380-3/4 353 (400-3/4)			
CIRCLING	520-1 490 (500-1)		600-1 1/2 570 (600-1 1/2) 600-2 570 (600-2)	
REIL Rwy 32 TDZL/RCLS Rwy 8, 14, and 26 HIRL Rwy 8-26 and 14-32				
FAF to MAP 5.1 NM				
Knots 60 90 120 150 180				
Min:Sec 5:06 3:24 2:33 2:02 1:42				

SE-3, 11 JUN 2026 to 09 JUL 2026

SE-3, 11 JUN 2026 to 09 JUL 2026