

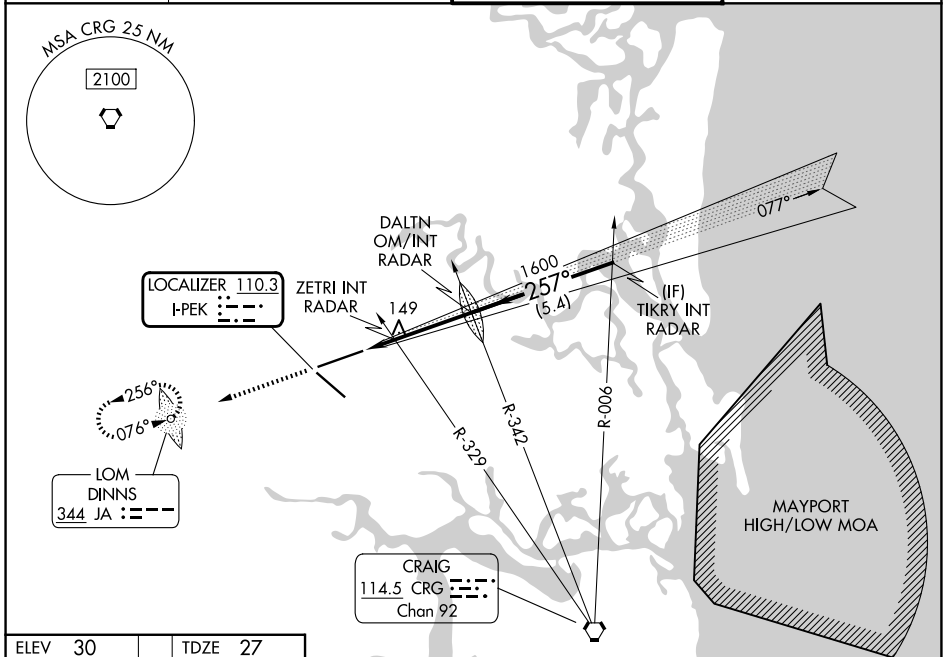
LOC I-PEK 110.3	APP CRS 257°	Rwy Ldg 10000 TDZE 27 Apt Elev 30
---------------------------	------------------------	--

ILS Y or LOC Y RWY 26

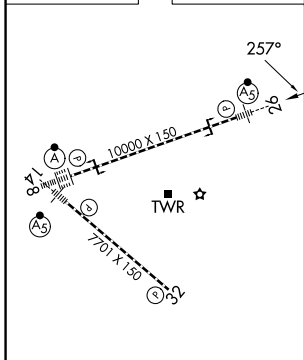
JACKSONVILLE INTL (JAX)

ADF required. RADAR required for procedure entry.	MALSR 	MISSED APPROACH: Climb to 3000 direct DINNS LOM and hold, continue climb-in-hold to 3000.
▼ For inop ALS, ZETRI Fix Minimums: increase S-LOC 26 Cats C/D visibility to RVR 5500.		

D-ATIS 125.85	JACKSONVILLE APP CON 119.0 269.9	JACKSONVILLE TOWER 118.3 317.7	GND CON 121.9 348.6
-------------------------	--	--	-------------------------------



ELEV 30	TDZE 27
---------	---------



3000	DINNS	VGSI and ILS glidepath not coincident (VGSI Angle 3.00/TCH 70).			
↑		DALTN OM/INT RADAR	TIKRY INT RADAR		
2000		ZETRI INT RADAR	1402	257°	
			480	1600	GS 3.00° TCH 55
			1.2 NM	3 NM	5.4 NM
CATEGORY	A	B	C	D	
S-ILS 26	227/18 200 (200-½)				
S-LOC 26	480/24	453 (500-½)	480/45	453 (500-¾)	
CIRCLING	520-1	490 (500-1)	580-1½	580-2	550 (600-2)
ZETRI FIX MINIMUMS (DUAL VOR RECEIVERS REQUIRED)					
S-LOC 26	400/24	373 (400-½)	400/35	373 (400-¾)	
CIRCLING	520-1	490 (500-1)	580-1½	580-2	550 (600-2)

REIL Rwy 32
TDZL/RCLS Rws 8, 14, and 26
HIRL Rws 8-26 and 14-32

FAF to MAP 4.2 NM

Knots	60	90	120	150	180
Min:Sec	4:12	2:48	2:06	1:41	1:24

SE-3, 11 JUN 2026 to 09 JUL 2026

SE-3, 11 JUN 2026 to 09 JUL 2026