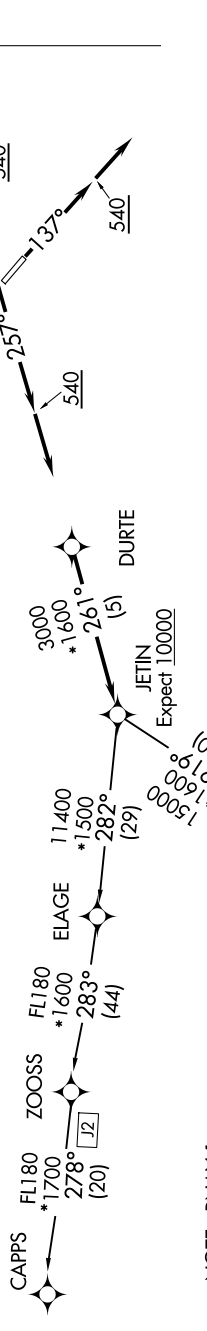


JETIN TWO DEPARTURE (RNAV)

SE-3, 11 JUN 2026 to 09 JUL 2026

D-ATIS 125.85
CLINC DEL 119.5 290.275
CPDLC
GND CON 121.9 348.6
JACKSONVILLE TOWER 118.3 317.7
JACKSONVILLE DEP CON 127.0 292.15



TOP ALTITUDE:
3000

JETIN TWO DEPARTURE (RNAV)

(JETIN2.JETIN) 08JAN15

DEPARTURE ROUTE DESCRIPTION

TAKEOFF RUNWAY 8: Climb heading 077° to 540, then climb to assigned altitude on heading 077° or as assigned by ATC, thence. . . .

TAKEOFF RUNWAY 14: Climb heading 137° to 540, then climb to assigned altitude on heading 137° or as assigned by ATC, thence. . . .

TAKEOFF RUNWAY 26: Climb heading 257° to 540, then climb to assigned altitude on heading 257° or as assigned by ATC, thence. . . .

TAKEOFF RUNWAY 32: Climb heading 317° to 540, then climb to assigned altitude on heading 317° or as assigned by ATC, thence. . . .

. . . . expect radar vectors to DURTE, then on track 261° to JETIN. Maintain 3000 or as assigned by ATC, expect clearance to filed altitude within ten (10) minutes after departure.

CAPPS TRANSITION (JETIN2.CAPPS):
JAYJA TRANSITION (JETIN2.JAYJA):

NOTE: RNAV 1
NOTE: Turbojets only.
NOTE: DME/DME/IRU or GPS required.
NOTE: Radar required.
NOTE: If unable to accept climb rate, advise ATC on initial contact.

TAKEOFF MINIMUMS:
Rwys 8, 14, 26, 32: Standard with minimum climb of 500' per NM to 540.

NOTE: Chart not to scale.

SE-3, 11 JUN 2026 to 09 JUL 2026