

WAAS CH <b>40199</b> <b>W32A</b>	APP CRS <b>317°</b>	Rwy Ldg TDZE Apt Elev	<b>7701</b> <b>24</b> <b>30</b>
--	------------------------	-----------------------------	---------------------------------------

# RNAV (GPS) Z RWY 32

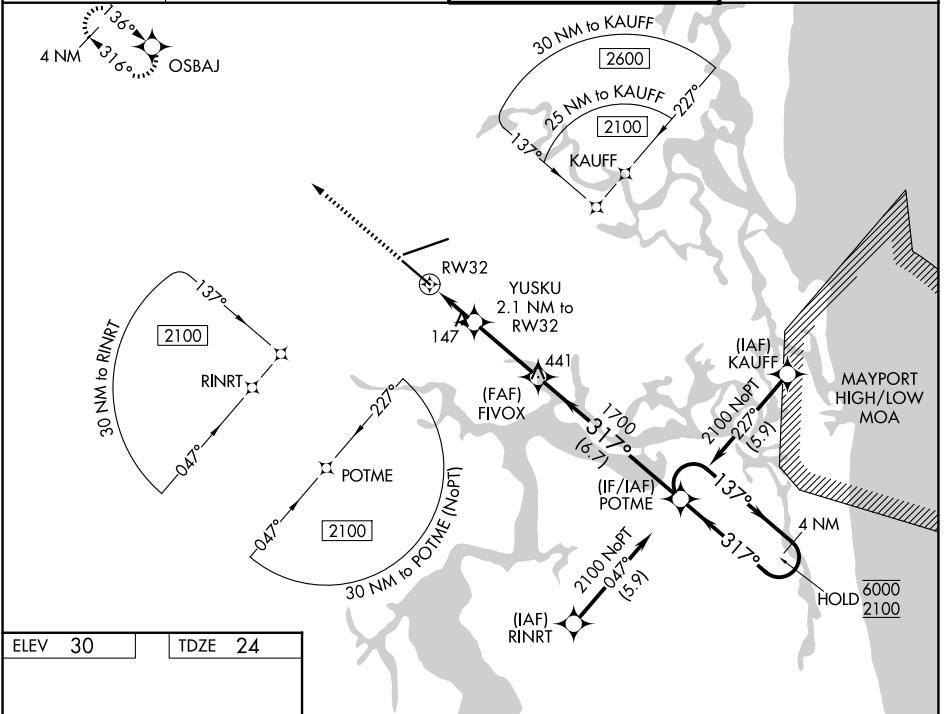
JACKSONVILLE INTL (JAX)

RNP APCH - GPS.

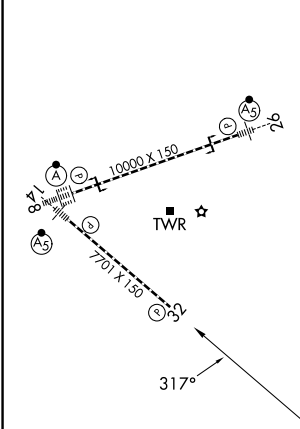
▼ Rwy 32 helicopter visibility reduction below 3/4 SM NA. For uncompensated Baro-VNAV systems, LNAV/VNAV NA below -2°C or above 54°C.

MISSED APPROACH: Climb to 2000 direct OSBAJ and hold.

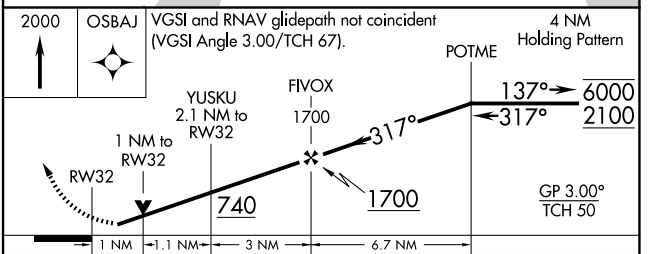
D-ATIS <b>125.85</b>	JACKSONVILLE APP CON <b>119.0 269.9</b>	JACKSONVILLE TOWER <b>118.3 317.7</b>	GND CON <b>121.9 348.6</b>
-------------------------	--	--	-------------------------------



ELEV 30	TDZE 24
---------	---------



REIL Rwy 32  
TDZL/RCLS Rwws 8, 14, and 26  
HIRL Rwws 8-26 and 14-32



CATEGORY	A	B	C	D
LPV DA		256-3/4	232 (300-3/4)	
LNAV/VNAV DA		400-1	376 (400-1)	
LNAV MDA		400-1	376 (400-1)	
CIRCLING	520-1	490 (500-1)	580-1 1/2 550 (600-1 1/2)	580-2 550 (600-2)

SE-3, 11 JUN 2026 to 09 JUL 2026

SE-3, 11 JUN 2026 to 09 JUL 2026