


LUFKIN FOUR DEPARTURE

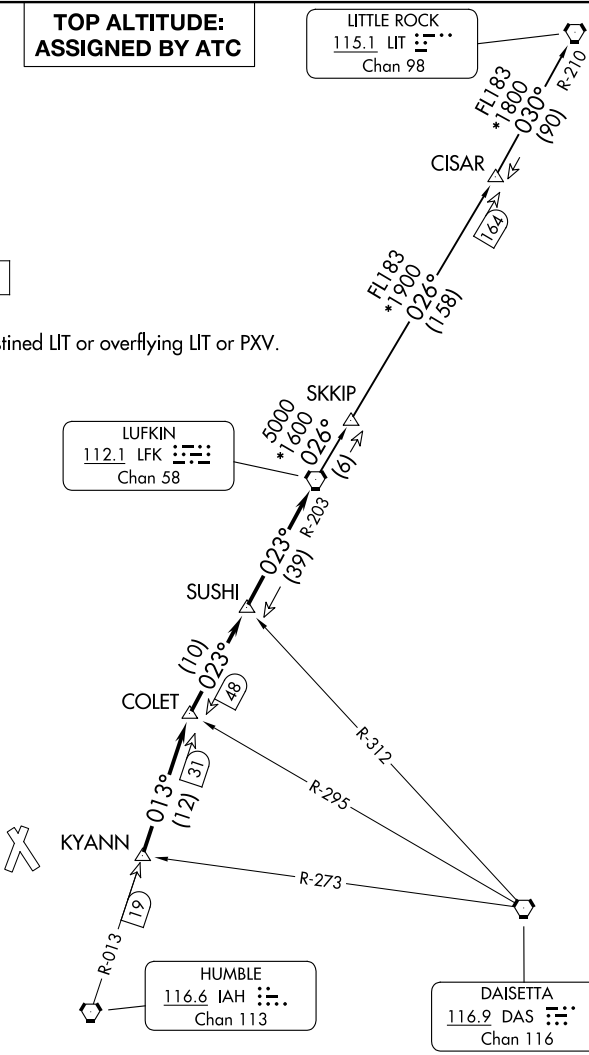
HOUSTON DEP CON
119.7 281.4
ATIS
118.325
CLNC DEL
120.45
CLNC DEL
119.55 (When twr closed)
GND CON
120.45
CONROE TOWER *
124.125 (CTAF)


**TOP ALTITUDE:
ASSIGNED BY ATC**

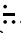
LITTLE ROCK
115.1 LIT 
Chan 98

RADAR and DME required.

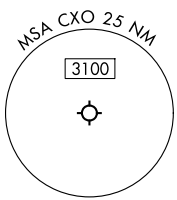
NOTE: For aircraft destined LIT or overflying LIT or PXV.



LUFKIN
112.1 LFK 
Chan 58

HUMBLE
116.6 IAH 
Chan 113

DAISETTA
116.9 DAS 
Chan 116



TAKEOFF MINIMUMS
Rwys 1, 14, 19, 32: Standard.

NOTE: Chart not to scale.

(CONTINUED ON FOLLOWING PAGE)

SC-5, 11 JUN 2026 to 09 JUL 2026

SC-5, 11 JUN 2026 to 09 JUL 2026

LUFKIN FOUR DEPARTURE



DEPARTURE ROUTE DESCRIPTION

TAKEOFF ALL RUNWAYS: When entering controlled airspace, climb on assigned heading for RADAR vectors to KYANN INT. Maintain ATC assigned altitude. Expect filed altitude 10 minutes after departure, thence. . . .

. . . .on IAH R-013 to COLET INT, then on depicted route to LFK VORTAC.

LITTLE ROCK TRANSITION (LFK4.LIT): From over LFK VORTAC on LFK R-026 to CISAR, then on LIT R-210 to LIT VORTAC.

SC-5, 11 JUN 2026 to 09 JUL 2026

SC-5, 11 JUN 2026 to 09 JUL 2026