

WAAS CH 62819 W32A	APP CRS 321°	Rwy Ldg TDZE Apt Elev	7501 245 245
--	------------------------	-----------------------------	---

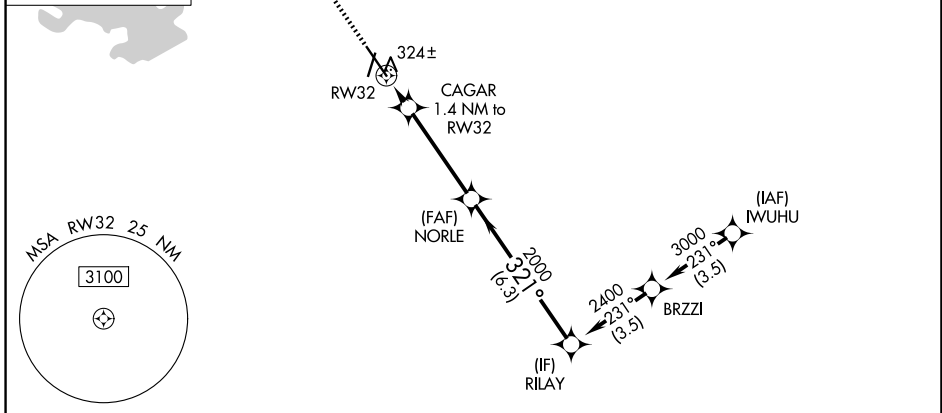
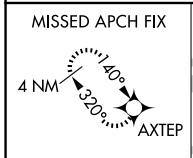
RNAV (GPS) RWY 32

CONROE/NORTH HOUSTON RGNL (C'X'O)

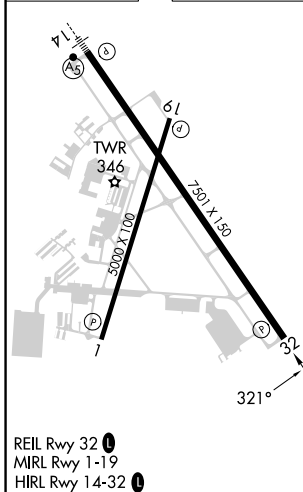
⚠ For uncompensated Baro-VNAV systems, LNAV/VNAV NA below -6°C (-22°F) or above 54°C (130°F). DME/DME RNP-0,3 NA.
⚠ Rwy 32 helicopter visibility reduction below ¾ SM NA.

MISSED APPROACH: Climb to 2100 direct AXTEP and hold.

ATIS 118.325	HOUSTON APP CON 119.7 281.4	CONROE TOWER* 124.125 (CTAF) 0	GND CON 120.45
------------------------	---------------------------------------	--	--------------------------



ELEV 245	D	TDZE 245
-----------------	----------	-----------------



2100	AXTEP				
*LNAV only.	CAGAR 1.4 NM to RW32	NORLE 2000	RILAY 2400	GP 3.00° TCH 50	
	720*	2000	321°		
	1.4 NM	4 NM	6.3 NM		
CATEGORY	A	B	C	D	
LPV DA	495-¾		250 (300-¾)		
LNAV/VNAV DA	505-⅞		260 (300-⅞)		
LNAV MDA	580-1		335 (400-1)		
CIRCLING	700-1	455 (500-1)	880-1¾ 635 (700-1¾)	960-2¼ 715 (800-2¼)	

SC-5, 11 JUN 2026 to 09 JUL 2026

SC-5, 11 JUN 2026 to 09 JUL 2026