

# STRYA EIGHT DEPARTURE (RNAV)

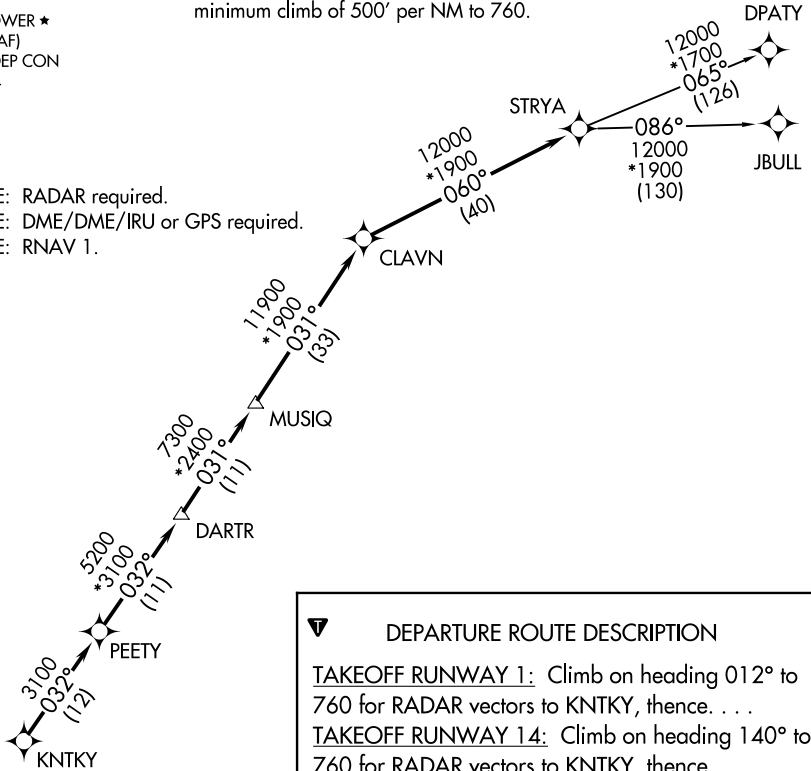
**TOP ALTITUDE: ASSIGNED BY ATC**

ATIS  
118.325  
CLNC DEL  
120.45  
CLNC DEL  
119.55 (when twr closed)  
GND CON  
120.45  
CONROE TOWER ★  
124.125 (CTAF)  
HOUSTON DEP CON  
119.7 281.4

### TAKEOFF MINIMUMS

Rwys 1, 14, 19, 32: Standard with  
minimum climb of 500' per NM to 760.

NOTE: RADAR required.  
NOTE: DME/DME/IRU or GPS required.  
NOTE: RNAV 1.



**DEPARTURE ROUTE DESCRIPTION**

TAKEOFF RUNWAY 1: Climb on heading 012° to 760 for RADAR vectors to KNTKY, thence. . .

TAKEOFF RUNWAY 14: Climb on heading 140° to 760 for RADAR vectors to KNTKY, thence. . .

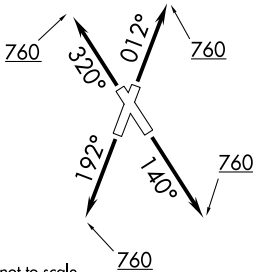
TAKEOFF RUNWAY 19: Climb on heading 192° to 760 for RADAR vectors to KNTKY, thence. . .

TAKEOFF RUNWAY 32: Climb on heading 320° to 760 for RADAR vectors to KNTKY, thence. . .

. . . on track 032° to PEETY, then on track 032° to DARTR, then on track 031° to MUSIQ, then on track 031° to CLAVN, then on track 060° to STRYA, then on (transition). Maintain ATC assigned altitude. Expect filed altitude 10 minutes after departure.

DPATY TRANSITION (STRYA8.DPATY)

JBULL TRANSITION (STRYA8.JBULL)



NOTE: Chart not to scale.

# STRYA EIGHT DEPARTURE (RNAV)

SC-5, 11 JUN 2026 to 09 JUL 2026

SC-5, 11 JUN 2026 to 09 JUL 2026