

(STYCK8.STYCK) 21336

AL-5573 (FAA)

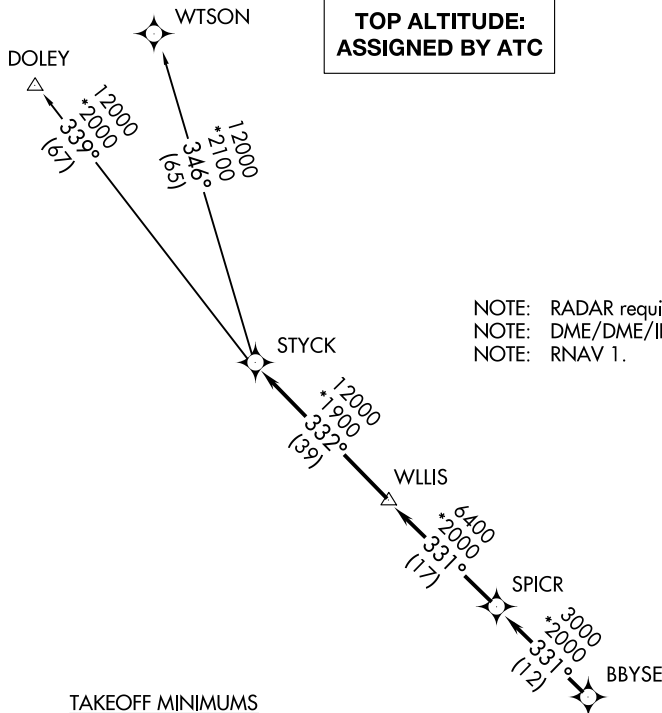
CONROE/NORTH HOUSTON RGNL (C'XO)

# STYCK EIGHT DEPARTURE (RNAV)

HOUSTON, TEXAS

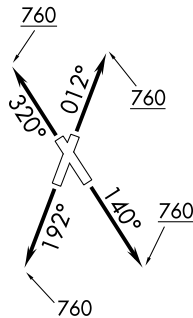
ATIS  
 118.325  
 CLNC DEL  
 120.45  
 CLNC DEL  
 119.55 (when twr closed)  
 GND CON  
 120.45  
 CONROE TOWER ★  
 124.125 (CTAF)  
 HOUSTON DEP CON  
 119.7 281.4

**TOP ALTITUDE:  
ASSIGNED BY ATC**



NOTE: RADAR required.  
 NOTE: DME/DME/IRU or GPS required.  
 NOTE: RNAV 1.

**TAKEOFF MINIMUMS**  
 Rwys 1, 14, 19, 32: Standard with  
 minimum climb of 500' per NM to 760.



NOTE: Chart not to scale.



## DEPARTURE ROUTE DESCRIPTION

**TAKEOFF RUNWAY 1:** Climb on heading 012° to 760 for RADAR vectors to BBYSE, thence. . .  
**TAKEOFF RUNWAY 14:** Climb on heading 140° to 760 for RADAR vectors to BBYSE, thence. . .  
**TAKEOFF RUNWAY 19:** Climb on heading 192° to 760 for RADAR vectors to BBYSE, thence. . .  
**TAKEOFF RUNWAY 32:** Climb on heading 320° to 760 for RADAR vectors to BBYSE, thence. . .  
 . . . on track 331° to SPICR, then on track 331° to WLLIS, then on track 332° to STYCK, then on  
 (transition). Maintain ATC assigned altitude. Expect filed altitude 10 minutes after departure.

DOLEY TRANSITION (STYCK8.DOLEY)  
WTSON TRANSITION (STYCK8.WTSON)

# STYCK EIGHT DEPARTURE (RNAV)

(STYCK8.STYCK) 07OCT21

HOUSTON, TEXAS

CONROE/NORTH HOUSTON RGNL (C'XO)

SC-5, 11 JUN 2026 to 09 JUL 2026

SC-5, 11 JUN 2026 to 09 JUL 2026