

WAAS CH <b>50109</b> <b>W17A</b>	APP CRS <b>174°</b>	Rwy Ldg TDZE <b>6705</b> <b>1530</b> Apt Elev <b>1533</b>
----------------------------------------	------------------------	--------------------------------------------------------------------

# RNAV (GPS) RWY 17

NEWTON-CITY-COUNTY (E WK)

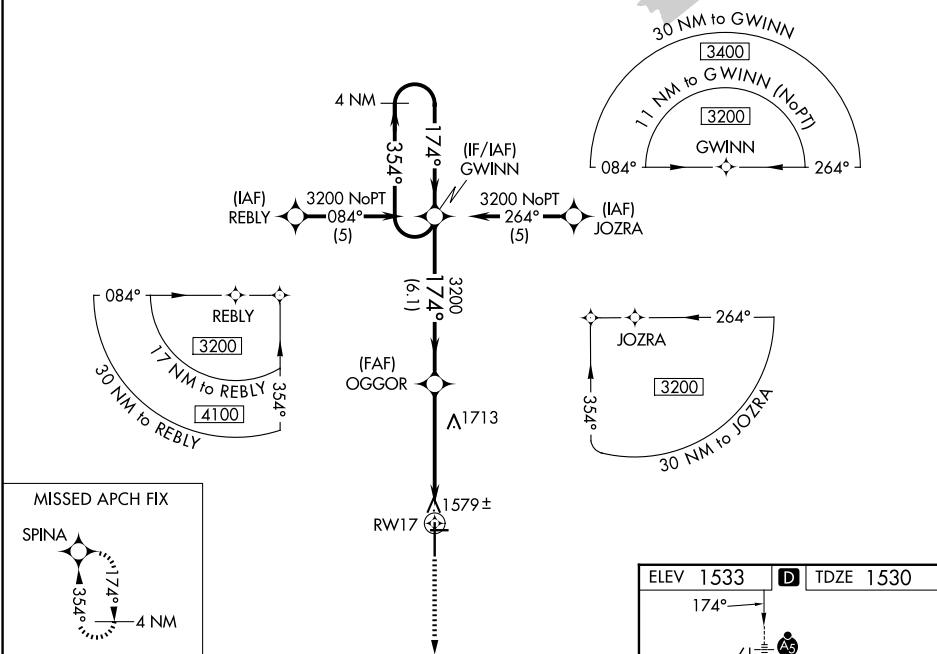
RNP APCH.

**▼** When local altimeter setting not received, use Wichita Dwight D Eisenhower Ntl altimeter setting: increase LPV DA to 1891 feet and visibility 1/8 SM; increase all MDAs 100 feet and visibility Cat C and LNAV Cat D 1/4 SM. **▼** YDP NA when using Wichita Dwight D Eisenhower Ntl altimeter setting. For inop ALS, increase LPV visibility to 7/8 SM and LNAV Cat C/D to 1 3/8 SM. For inop ALS when using Wichita Dwight D Eisenhower Ntl altimeter setting, increase LPV visibility to 1 SM. Circling Rwy 8, 26 NA at night.



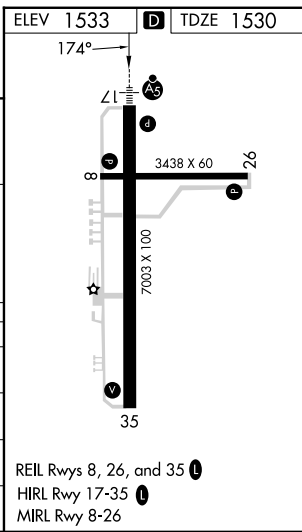
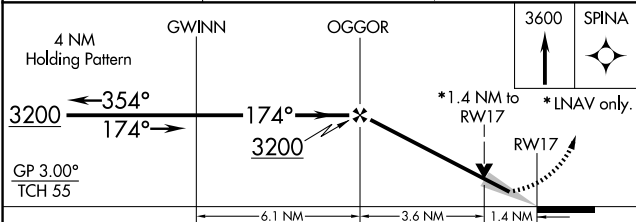
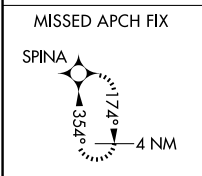
**MISSED APPROACH:**  
Climb to 3600 direct SPINA and hold.

AWOS-3PT <b>123.875</b>	WICHITA APP CON <b>125.5 306.2</b>	CLNC DEL <b>126.55</b>	UNICOM <b>123.0 (CTAF)</b>
----------------------------	---------------------------------------	---------------------------	-------------------------------



NC-2, 11 JUN 2026 to 09 JUL 2026

NC-2, 11 JUN 2026 to 09 JUL 2026



CATEGORY	A	B	C	D
LPV DA	1791-1/2 261 (300-1/2)			
LNAV/VNAV DA	NA			
LNAV MDA	2020-1/2 490 (500-1/2)	2020-1 490 (500-1)		
CIRCLING	2020-1 487 (500-1)	2020-1 1/2 487 (500-1 1/2)	2100-2 567 (600-2)	

REIL Rwy 8, 26, and 35 **Ⓛ**  
HIRL Rwy 17-35 **Ⓛ**  
MIRL Rwy 8-26