

WAAS CH <b>60913</b> <b>W36A</b>	APP CRS <b>359°</b>	Rwy Ldg <b>5500</b> TDZE <b>902</b> Apt Elev <b>910</b>
--	------------------------	---

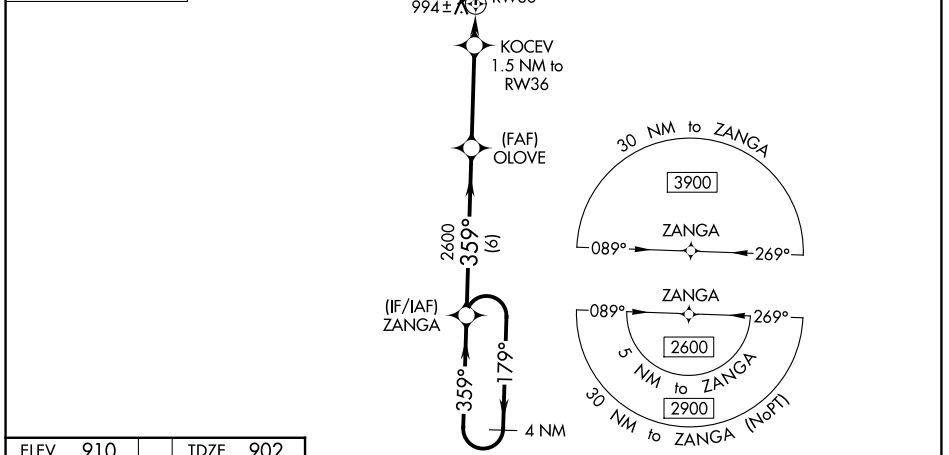
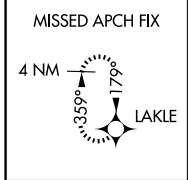
# RNAV (GPS) RWY 36

SEDALIA RGNL (D/MO)

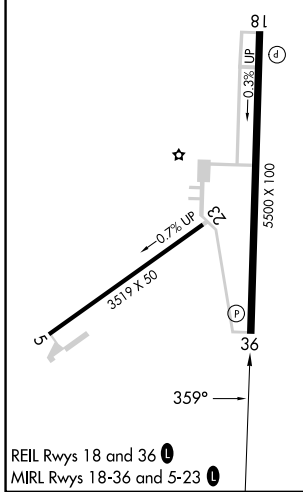
**⚠** DME/DME RNP-0.3 NA. When local altimeter setting not received, use Whiteman AFB altimeter setting: increase all DA 46 feet; increase all MDA 60 feet and LNAV visibility Cats C/D 1/8 mile, Circling Cats C/D 1/4 mile. For uncompensated Baro-VNAV systems, LNAV/VNAV NA below -1.6°C (3°F) or above 54°C (130°F). Baro-VNAV and VDP NA when using Whiteman AFB altimeter setting. Helicopter visibility reduction below 3/4 SM NA. Night Landing Rwy 5, 23 NA.

**MISSED APPROACH:** Climb to 2600 direct LAKLE and hold.

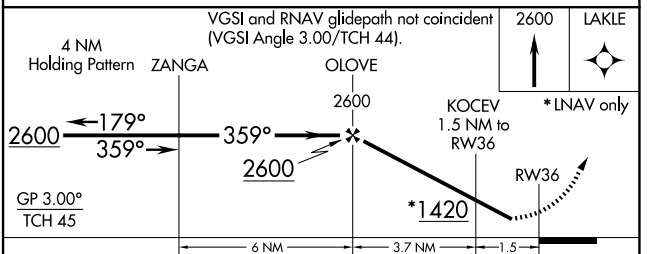
ASOS <b>120.525</b>	WHITEMAN APP CON * <b>127.45 284.0</b>	UNICOM <b>122.8 (CTAF) 0</b>
------------------------	---	---------------------------------



ELEV 910	TDZE 902
----------	----------



REIL Rwy 18 and 36 **0**  
MIRL Rwy 18-36 and 5-23 **0**



CATEGORY	A	B	C	D
LPV DA		1152-1	250 (300-1)	
LNAV/VNAV DA		1155-1	253 (300-1)	
LNAV MDA		1260-1	358 (400-1)	
CIRCLING	1360-1 450 (500-1)	1460-1 550 (600-1)	1640-2 730 (800-2)	1640-2 1/4 730 (800-2 1/4)

NC-3, 11 JUN 2026 to 09 JUL 2026

NC-3, 11 JUN 2026 to 09 JUL 2026