

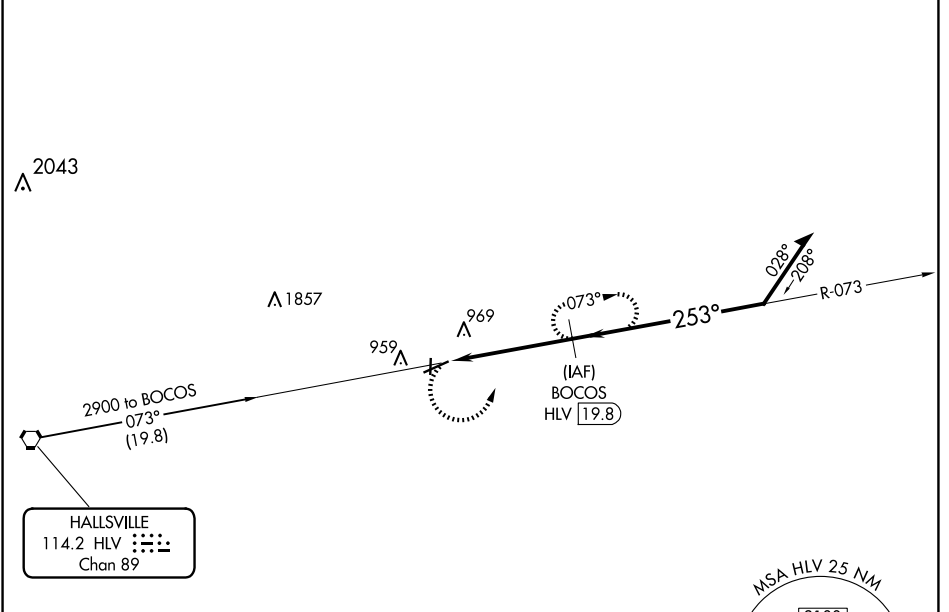
VORTAC HLV <b>114.2</b> Chan <b>89</b>	APP CRS <b>253°</b>	Rwy Idg TDZE Apt Elev	<b>5130</b> <b>817</b> <b>823</b>
--	------------------------	-----------------------------	---

# VOR/DME RWY 24

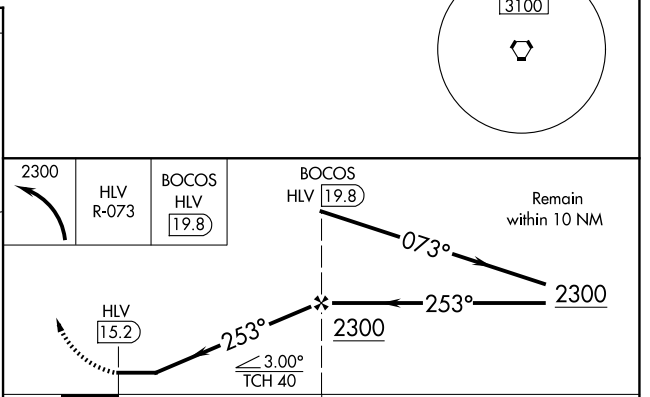
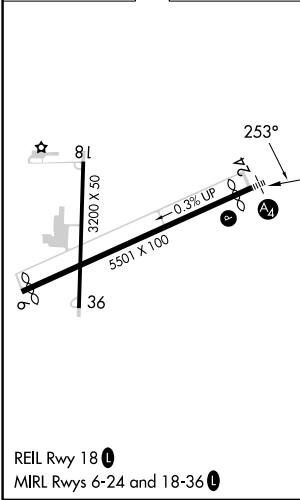
MEXICO MEML (MYJ)

<b>▼</b> <b>▲</b> NA	Helicopter visibility reduction below ¾ SM NA. When local altimeter setting not received, use Columbia Rgnl altimeter setting and increase all MDAs 80 feet, increase S-24 visibility Cat C ½ SM and Circling visibility Cat C ½ SM. Inop table does not apply.	MALS <b>4 1/2</b>	MISSED APPROACH: Climbing left turn to 2300 via HLV R-073 to BOCOS/19.8 DME and hold.
-------------------------	---	----------------------	---

AWOS-3PT <b>120.575</b>	MIZZU APP CON <b>124.375</b>	CTAF <b>122.9</b> <b>0</b>
----------------------------	---------------------------------	-------------------------------



ELEV <b>823</b>	TDZE <b>817</b>
-----------------	-----------------



CATEGORY	A	B	C	D
S-24	1220-1	403 (400-1)	1220-1¼ 403 (400-1¼)	NA
CIRCLING	1280-1	457 (500-1)	1420-1½ 597 (600-1½)	NA

NC-3, 11 JUN 2026 to 09 JUL 2026

NC-3, 11 JUN 2026 to 09 JUL 2026