

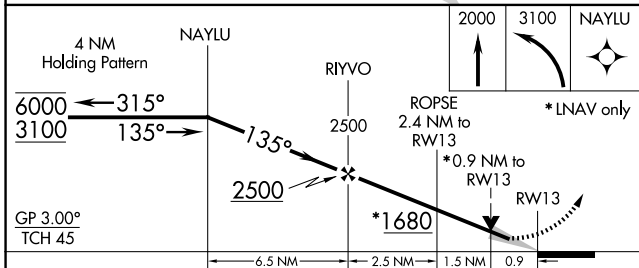
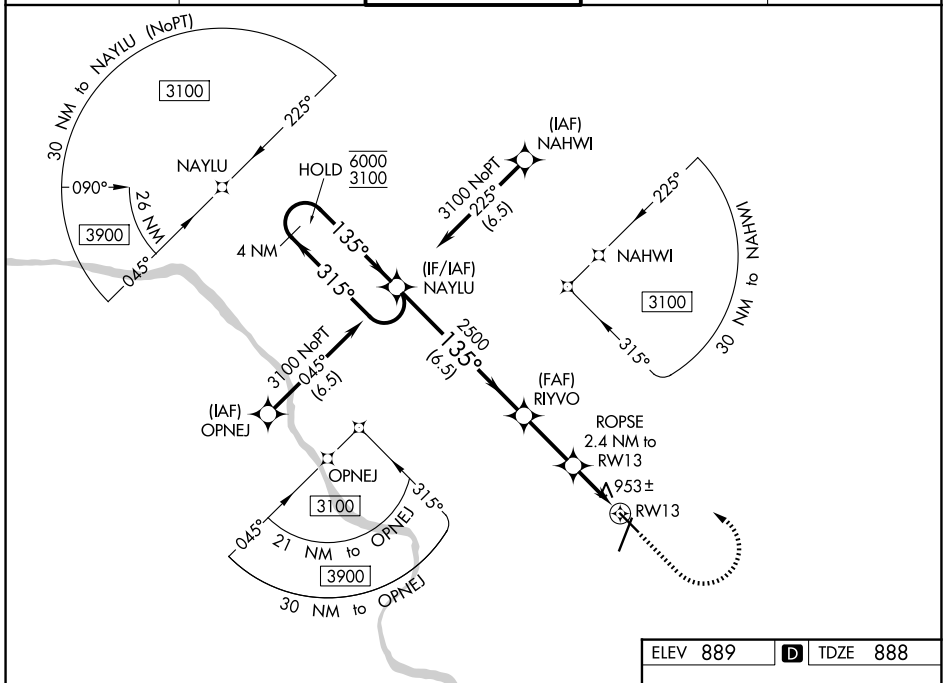
WAAS CH 40042 W13A	APP CRS 135°	Rwy Ldg TDZE Apt Elev	5500 888 889
--	------------------------	-----------------------------	---

RNAV (GPS) RWY 13

COLUMBIA RGNL (COU)

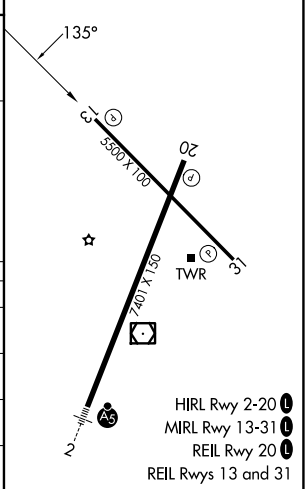
RNP APCH.	MISSED APPROACH: Climb to 2000 then climbing left turn to 3100 direct NAYLU and hold.
<p>▼ Circling NA for Cat D west of Rws 2 and 13. Circling Rwy 20 NA at night. For ▲ uncompensated Baro-VNAV systems, LNAV/VNAV NA below -17°C or above 54°C.</p>	

ATIS 128.45	MIZZO APP CON 124.375 353.925	COLUMBIA TOWER * 119.3 (CTAF) 363.25	GND CON 121.6	UNICOM 122.95
-----------------------	---	---	-------------------------	-------------------------



ELEV 889	D TDZE 888
----------	-------------------

CATEGORY	A	B	C	D
LPV DA		1139-1	251 (300-1)	
LNAV/VNAV DA		1139-1	251 (300-1)	
LNAV MDA		1220-1	332 (400-1)	
CIRCLING	1300-1 411 (500-1)	1340-1 451 (500-1)	1360-1½ 471 (500-1½)	1440-2 551 (600-2)



NC-3, 11 JUN 2026 to 09 JUL 2026

NC-3, 11 JUN 2026 to 09 JUL 2026

- HIRL Rwy 2-20 **1**
- MIRL Rwy 13-31 **1**
- REIL Rwy 20 **1**
- REIL Rws 13 and 31 **1**