


WAAS CH <b>77599</b> <b>W02A</b>	APP CRS <b>021°</b>	Rwy Ldg TDZE <b>889</b> Apt Elev <b>889</b>	<b>7401</b>
--	------------------------	---	-------------

# RNAV (GPS) RWY 2

COLUMBIA RGNL (COT)

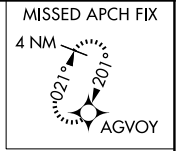
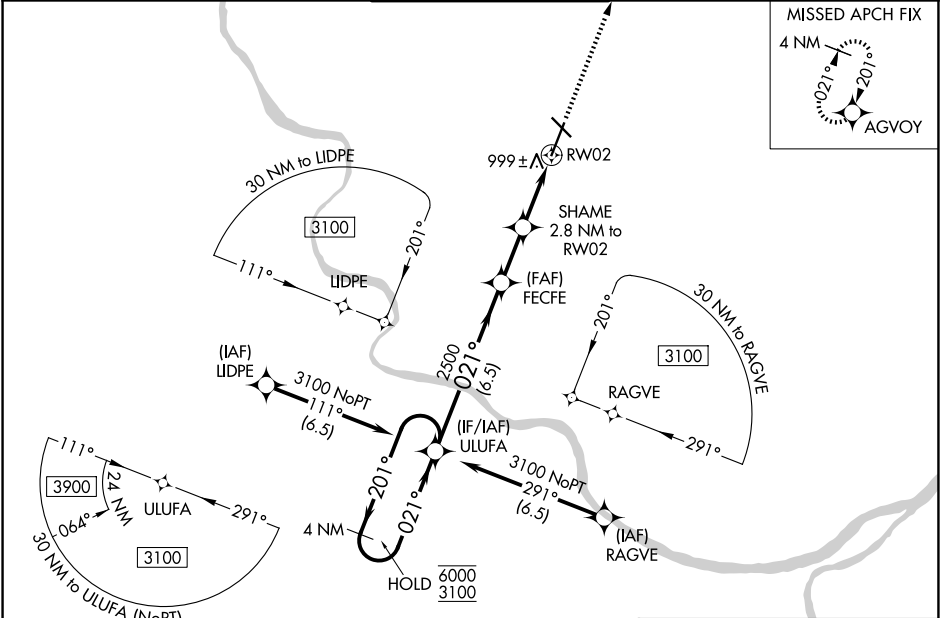
RNP APCH - GPS.

**⚠** For uncompensated Baro-VNAV systems, LNAV/VNAV NA below -18°C or above 54°C. For inop ALS, increase LNAV/VNAV all Cats visibility to RVR 4000, and increase LNAV Cat C/D visibility to RVR 5500. Circling NA for Cat D west of Rwy 2 and 13.  
\* RVR 1800 authorized with the use of FD or AP or HUD to DA.

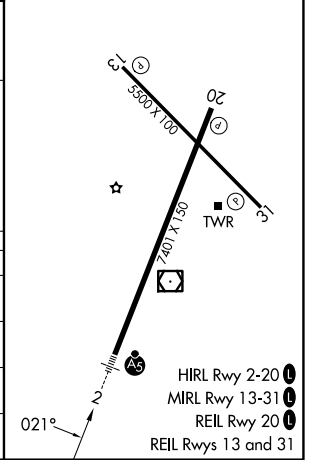
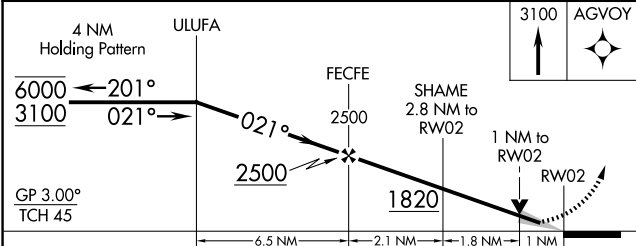
MALSRL 

MISSED APPROACH: Climb to 3100 direct AGVOY and hold.

ATIS <b>128.45</b>	MIZZO APP CON <b>124.375 353.925</b>	COLUMBIA TOWER * <b>119.3 (CTAF) 0 363.25</b>	GND CON <b>121.6</b>	UNICOM <b>122.95</b>
-----------------------	---	--	-------------------------	-------------------------



ELEV 889	<b>D</b> TDZE 889
----------	-------------------



CATEGORY	A	B	C	D
LPV DA*	1089/24		200 (200-½)	
LNAV/VNAV DA	1143/24		254 (300-½)	
LNAV MDA	1260/24	371 (400-½)	1260/30	371 (400-¾)
CIRCLING	1300-1 411 (500-1)	1340-1 451 (500-1)	1360-1½ 471 (500-1½)	1440-2 551 (600-2)

NC-3, 11 JUN 2026 to 09 JUL 2026

NC-3, 11 JUN 2026 to 09 JUL 2026

- HIRL Rwy 2-20 **1**
- MIRL Rwy 13-31 **1**
- REIL Rwy 20 **1**
- REIL Rws 13 and 31 **1**