

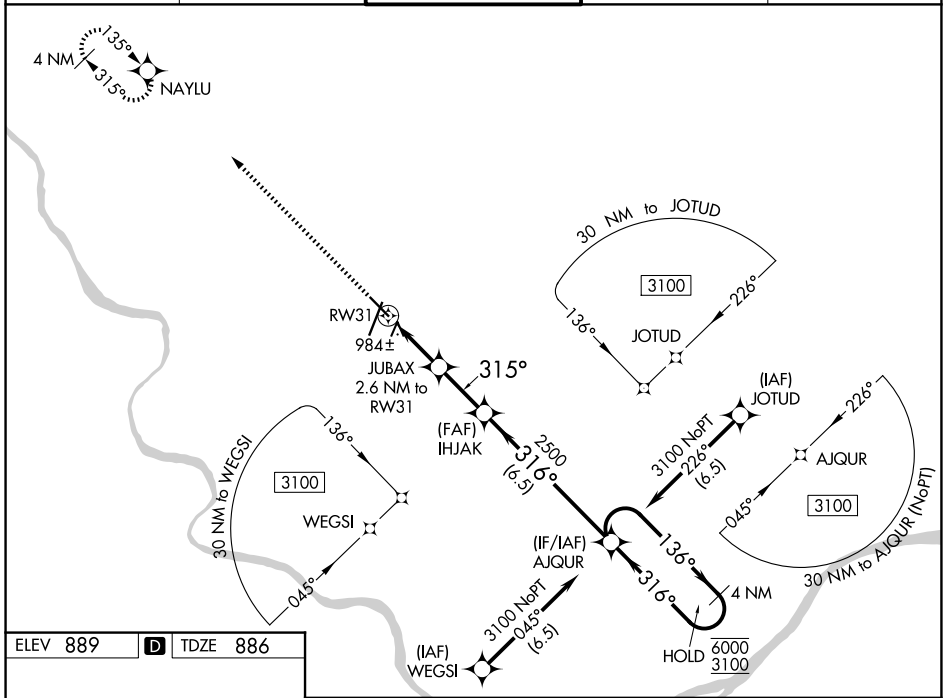
WAAS CH <b>86242</b> <b>W31A</b>	APP CRS <b>315°</b>	Rwy Ldg TDZE Apt Elev	<b>5500</b> <b>886</b> <b>889</b>
--	------------------------	-----------------------------	---

# RNAV (GPS) RWY 31

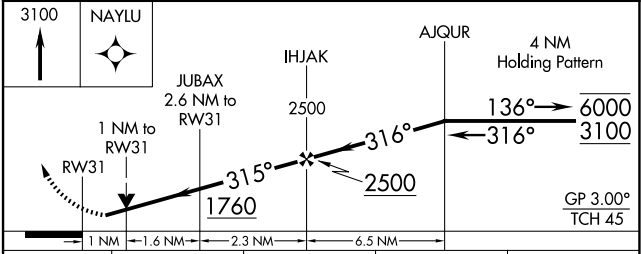
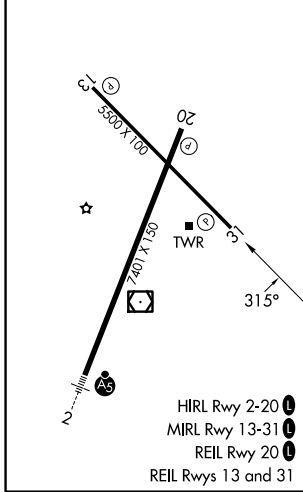
COLUMBIA RGNL (COU)

RNP APCH - GPS.		MISSED APPROACH: Climb to 3100 direct NAYLU and hold.	
Rwy 31 helicopter visibility reduction below 3/4 SM NA. For uncompensated Baro-VNAV systems, LNAV/VNAV NA below -17°C or above 54°C.			

ATIS <b>128.45</b>	MIZZU APP CON <b>124.375 353.925</b>	COLUMBIA TOWER * <b>119.3 (CTAF) 363.25</b>	GND CON <b>121.6</b>	UNICOM <b>122.95</b>
-----------------------	---	--	-------------------------	-------------------------



ELEV 889	<b>D</b>	TDZE 886
----------	----------	----------



CATEGORY	A	B	C	D
LPV DA		1138- <sup>3</sup> / <sub>4</sub>	252 (300- <sup>3</sup> / <sub>4</sub> )	
LNAV/VNAV DA		1145- <sup>3</sup> / <sub>4</sub>	259 (300- <sup>3</sup> / <sub>4</sub> )	
LNAV MDA		1240-1	354 (400-1)	
CIRCLING	1300-1	1340-1	1360-1½	1880-3
	411 (500-1)	451 (500-1)	471 (500-1½)	991 (1000-3)

NC-3, 11 JUN 2026 to 09 JUL 2026

NC-3, 11 JUN 2026 to 09 JUL 2026