

VOR/DME COU 110.2 Chan 39	APP CRS 153°	Rwy Ldg 5500 TDZE 888 Apt Elev 889
---	------------------------	---

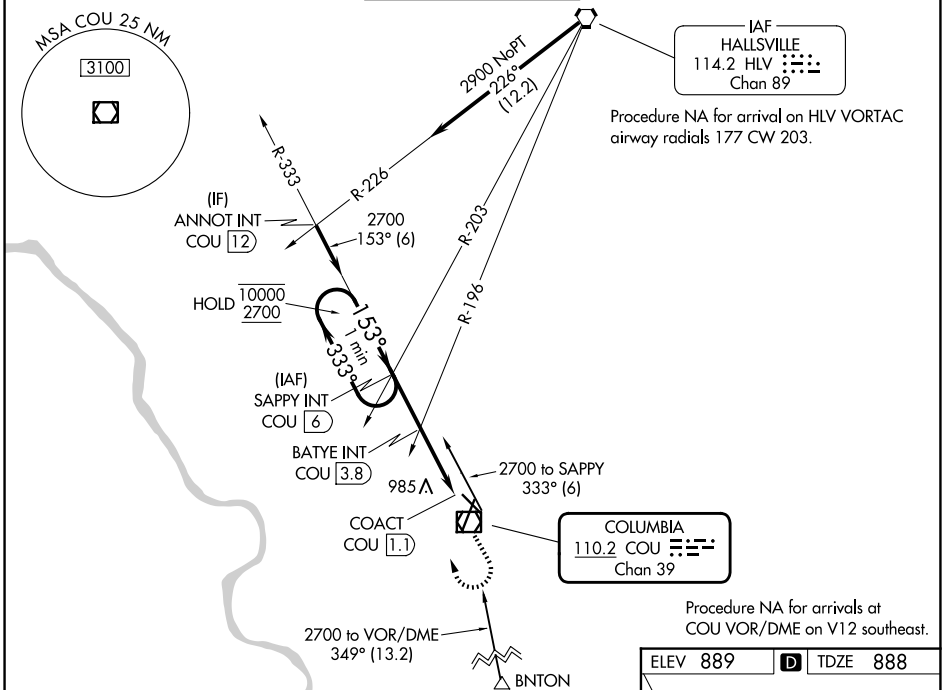
VOR RWY 13

COLUMBIA RGNL (COU)

⚠ Circling NA for Cat D west of Rwy 2 and 13.
⚠ Circling Rwy 20 NA at night.

MISSED APPROACH: Climb to 1900 then dimbing right turn to 2700 on COU VOR/DME R-333 to SAPPY INT/COU 6 DME and hold.

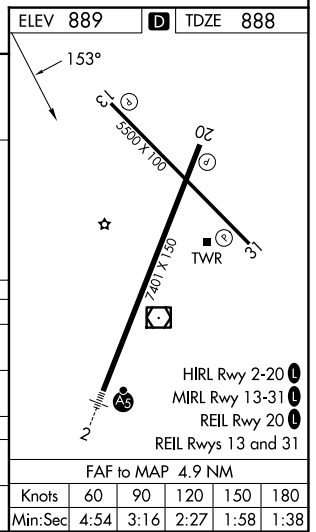
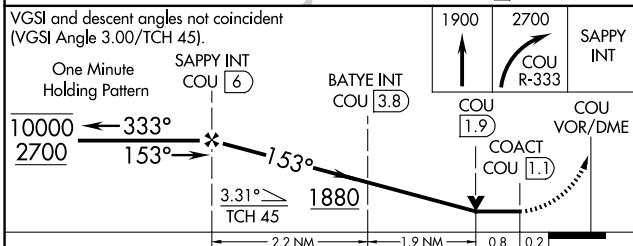
ATIS 128.45	MIZZO APP CON 124.375 353.925	COLUMBIA TOWER * 119.3 (CTAF) 0 363.25	GND CON 121.6	UNICOM 122.95
-----------------------	---	---	-------------------------	-------------------------



Procedure NA for arrival on HLV VORTAC
 airway radials 177 CW 203.

COLUMBIA
110.2 COU
 Chan 39

Procedure NA for arrivals at
 COU VOR/DME on V12 southeast.



CATEGORY	A	B	C	D
S-13	1880-1¼ 991 (1000-1¼)	1880-1½ 991 (1000-1½)	1880-3	991 (1000-3)
CIRCLING	1880-1¼ 991 (1000-1¼)	1880-1½ 991 (1000-1½)	1880-3	991 (1000-3)
BATYE FIX MINIMUMS				
S-13	1240-1 351 (400-1)			
CIRCLING	1300-1 411 (500-1)	1340-1 451 (500-1)	1360-1½ 471 (500-1½)	1440-2 551 (600-2)

NC-3, 11 JUN 2026 to 09 JUL 2026

NC-3, 11 JUN 2026 to 09 JUL 2026