

(TERPZ8.TERPZ) 24193

AL-5596 (FAA)

EASTON/NEWNAM FLD (ESN)

# TERPZ EIGHT DEPARTURE (RNAV)

EASTON, MARYLAND

POTOMAC DEP CON  
 133.75 254.35  
 ATIS  
 124.475  
 CLNC DEL  
 119.075  
 GND CON  
 119.075  
 EASTON TOWER ★  
 118.525 (CTAF)

RNAV 1 - DME/DME/IRU or GPS.

RADAR required.

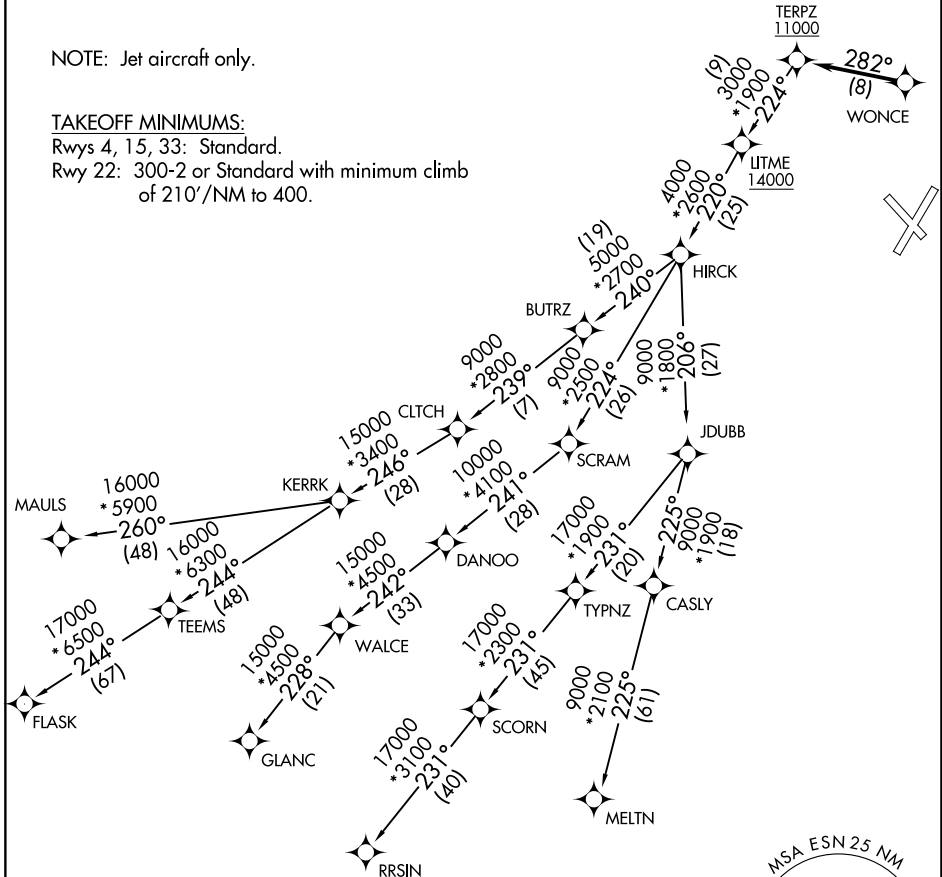
**TOP ALTITUDE:**  
**17000**

NOTE: Jet aircraft only.

### TAKEOFF MINIMUMS:

Rwys 4, 15, 33: Standard.

Rwy 22: 300-2 or Standard with minimum climb of 210'/NM to 400.



NE-3, 11 JUN 2026 to 09 JUL 2026

NE-3, 11 JUN 2026 to 09 JUL 2026

NOTE: Chart not to scale.

# TERPZ EIGHT DEPARTURE (RNAV)

(TERPZ8.TERPZ) 11JUL24

EASTON, MARYLAND

EASTON/NEWNAM FLD (ESN)



DEPARTURE ROUTE DESCRIPTION

Climb on assigned heading for RADAR vectors to WONCE, thence. . . .

. . . then on track 282° to cross TERPZ at or above 11000, then on assigned transition.  
Maintain 17000, expect filed altitude 10 minutes after departure.

CLTCH TRANSITION (TERPZ8.CLTCH)

FLASK TRANSITION (TERPZ8.FLASK)

GLANC TRANSITION (TERPZ8.GLANC)

MAULS TRANSITION (TERPZ8.MAULS)

MELTN TRANSITION (TERPZ8.MELTN)

RRSIN TRANSITION (TERPZ8.RRSIN)

NE-3, 11 JUN 2026 to 09 JUL 2026

NE-3, 11 JUN 2026 to 09 JUL 2026