

# RNAV (GPS) RWY 7

VIDALIA RGNL (VDI)

WAAS CH <b>66037</b> <b>W07A</b>	APP CRS <b>069°</b>	Rwy Ldg TDZE Apt Elev	<b>6002</b> <b>274</b> <b>274</b>
----------------------------------------	------------------------	-----------------------------	-----------------------------------------

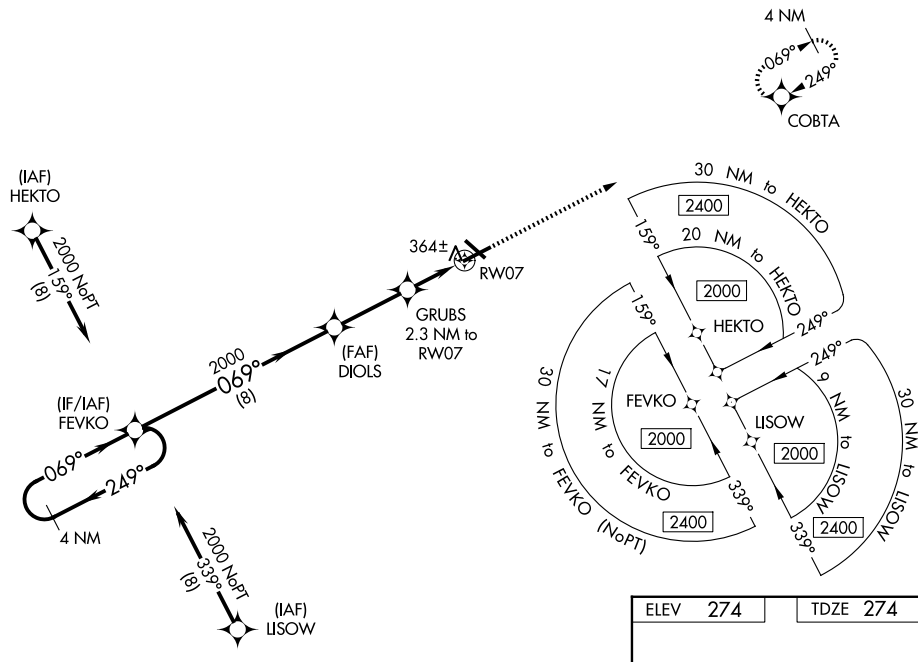
**⚠** For uncompensated Baro-VNAV systems, LNAV/VNAV NA below -15°C (5°F) or above 54°C (130°F). DME/DME RNP-0.3 NA. When local altimeter setting not received, use Baxley altimeter setting and increase all DA 77 feet and all MDA 80 feet, increase LPV and LNAV/VNAV all Cats visibility ¼ mile, LNAV and Circling Cats C/D visibility ¼ mile. VDP and Baro-VNAV NA when using Baxley altimeter setting. Night Landing: Rwy 32 NA. Helicopter visibility reduction below ¼ SM NA.

**MISSED APPROACH:**  
Climb to 2000 direct COBTA and hold.

AWOS-3  
**119.925**

JACKSONVILLE CENTER  
**127.575 269.025**

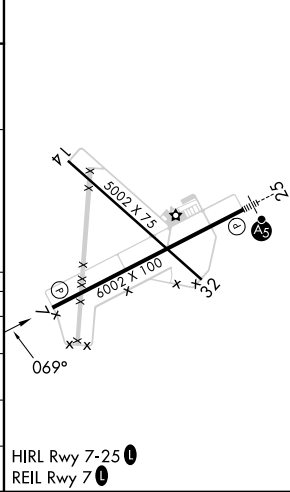
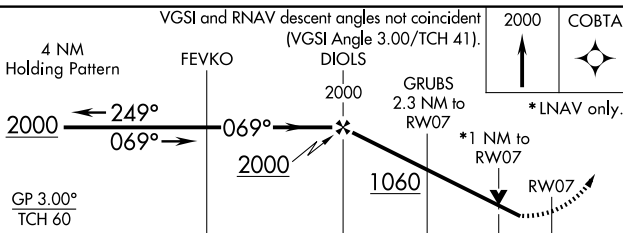
UNICOM  
**122.8 (CTAF)**



SE-4, 11 JUN 2026 to 09 JUL 2026

SE-4, 11 JUN 2026 to 09 JUL 2026

ELEV <b>274</b>	TDZE <b>274</b>
-----------------	-----------------



CATEGORY	A	B	C	D
LPV DA		524-¾	250 (300-¾)	
LNAV/VNAV DA		527-¾	253 (300-¾)	
LNAV MDA		620-1	346 (400-1)	
CIRCLING	740-1	466 (500-1)	920-1¾ 646 (700-1¾)	1060-2½ 786 (800-2½)

HIRL Rwy 7-25 **⓪**  
REIL Rwy 7 **⓪**