

PLAINS TWO DEPARTURE
(PLAIN2.DEN) 12JUN25

PLAINS TWO DEPARTURE
26022

AI-5612 (FAA)

ROCKY MOUNTAIN METRO (BJC)
DENVER, COLORADO

DENVER DEP CON
125.125 263.025
ATIS
126.25
CLNC DEL
132.6

**TOP ALTITUDE:
ASSIGNED BY ATC**

RADAR required.

JEFFCO
115.4 BJC
Chan 101

AKRON
114.4 AKO
Chan 91

HAYES CENTER
117.7 HCT
Chan 124

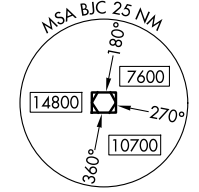
MC COOK
115.3 MCK
Chan 100

THURMAN
112.9 TXC
Chan 76

DENVER
117.9 DEN
Chan 126

GOODLAND
115.1 GLD
Chan 98

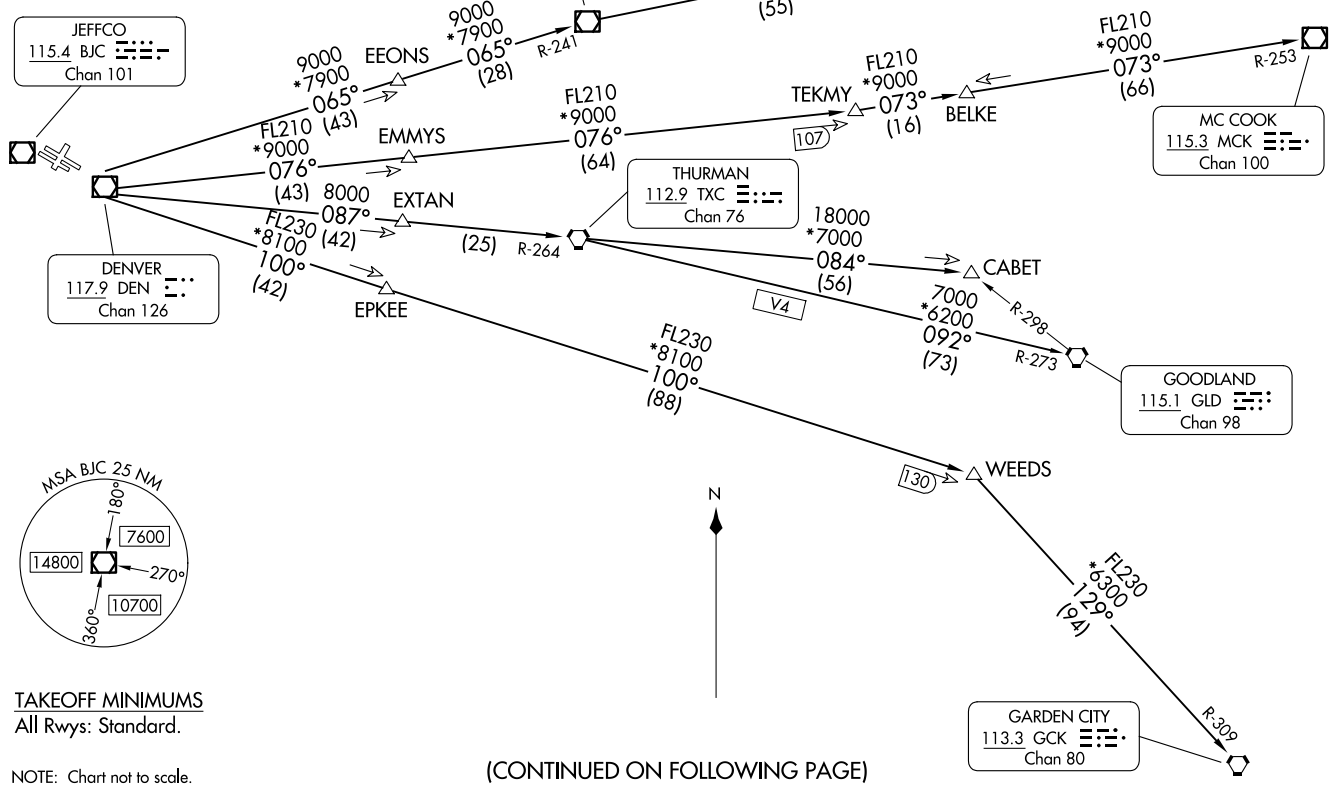
GARDEN CITY
113.3 GCK
Chan 80



TAKEOFF MINIMUMS
All Rwy's: Standard.

NOTE: Chart not to scale.

(CONTINUED ON FOLLOWING PAGE)





DEPARTURE ROUTE DESCRIPTION

TAKEOFF RUNWAY 3: Climb to assigned altitude and heading between 350° CW 150° from DER, thence. . . .

TAKEOFF RUNWAYS 12L/R: Climb to assigned altitude and heading between 150° CCW 350° from DER, thence. . . .

TAKEOFF RUNWAY 21: Climbing left turn to assigned altitude and heading between 150° CCW to 024° from DER, thence. . . .

TAKEOFF RUNWAYS 30L/R: Climbing right turn to assigned altitude and heading between 350° CW 113° from DER, thence. . . .

. . . .RADAR vectors to assigned route. Expect filed altitude 10 minutes after departure.

LOST COMMUNICATIONS: If no transmissions are received within one minute after departure, maintain assigned heading until 7000, then climb to filed altitude direct to DEN VOR/DME, then on assigned route. If filed altitude is above 10000, cross DEN VOR/DME at or above 11000.

AKRON TRANSITION (PLAIN2.AKO): From over DEN VOR/DME on DEN R-065 and AKO R-241 to AKO VOR/DME.

ASHBY TRANSITION (PLAIN2.ASHBY): From over DEN VOR/DME on DEN R-065 and AKO R-241 to AKO VOR/DME, then on AKO R-066 and HCT R-250 to ASHBY.

BELKE TRANSITION (PLAIN2.BELKE): From over DEN VOR/DME on DEN R-076 and MCK R-253 to BELKE INT.

CABET TRANSITION (PLAIN2.CABET): From over DEN VOR/DME on DEN R-087 and TXC R-264 to TXC VORTAC, then on TXC R-084 to CABET.

GARDEN CITY TRANSITION (PLAIN2.GCK): From over DEN VOR/DME on DEN R-100 and GCK R-309 to GCK VORTAC.

GOODLAND TRANSITION (PLAIN2.GLD): From over DEN VOR/DME on DEN R-087 and TXC R-264 to TXC VORTAC, then on TXC R-092 and GLD R-273 to GLD VORTAC.

HAYES CENTER TRANSITION (PLAIN2.HCT): From over DEN VOR/DME on DEN R-065 and AKO R-241 to AKO VOR/DME, then on AKO R-066 and HCT R-250 to HCT VORTAC.

MCCOOK TRANSITION (PLAIN2.MCK): From over DEN VOR/DME on DEN R-076 to TEKMY, then on MCK R-253 to MCK VOR/DME.

THURMAN TRANSITION (PLAIN2.TXC): From over DEN VOR/DME on DEN R-087 and TXC R-264 to TXC VORTAC.

WEEDS TRANSITION (PLAIN2.WEEDS): From over DEN VOR/DME on DEN R-100 to WEEDS.

SW-1, 11 JUN 2026 to 09 JUL 2026

SW-1, 11 JUN 2026 to 09 JUL 2026