

VOR/DME BJC 115.4 Chan 101	APP CRS 284°	Rwy Ldg	30L	30R
		TDZE	7002	9000
		Apt Elev	5628	5599
			5673	5673

VOR/DME RWY 30L/R

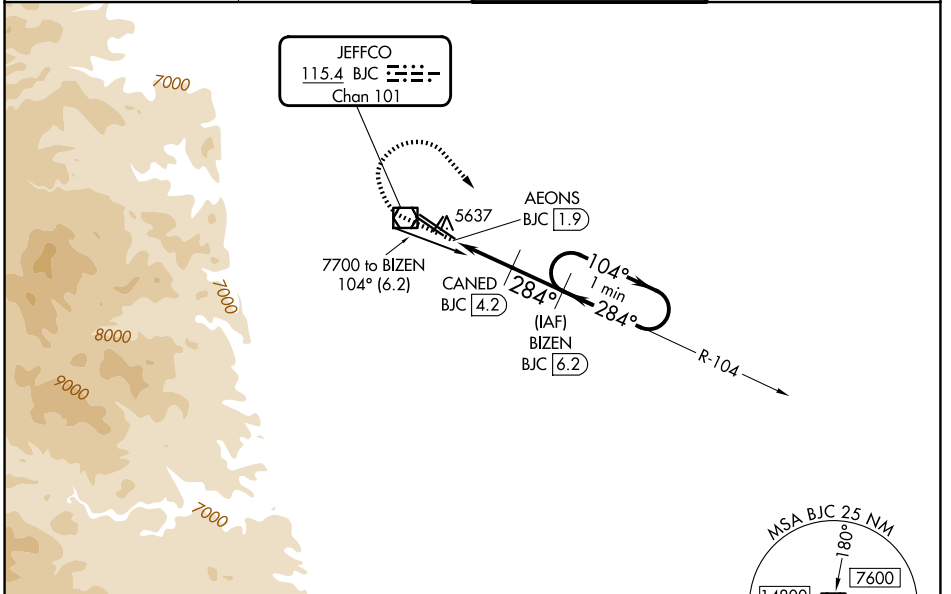
ROCKY MOUNTAIN METRO (BJC)

NA When local altimeter setting not received, use Denver Intl altimeter setting and increase all MDA 100 feet. Increase S-30L Cats C/D visibility to 1 mile and Circling Cat C to 2¼ mile. For inoperative MALSRS, increase S-30R all Cats visibility to 1 mile. For inoperative MALSRS, when using Denver Intl altimeter setting, increase S-30R Cats C/D visibility to 1½ mile.

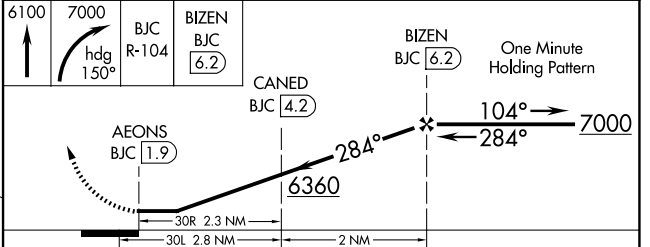
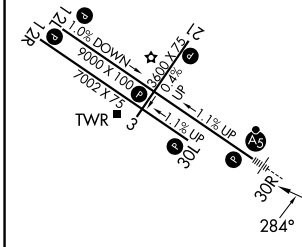
MALSRS
Rwy 30R

MISSED APPROACH: Climb to 6100 then climbing right turn to 7000 on heading 150° and on BJC VOR/DME R-104 to BIZEN/BJC 6.2 DME and hold.

ATIS 126.25	DENVER APP CON 125.125 263.025	METRO TOWER* 118.6 (CTAF) 233.7	GND CON 121.7
-----------------------	--	---	-------------------------



ELEV 5673	D TDZE 30L 5628
	TDZE 30R 5599



CATEGORY	A	B	C	D
S-30R	5920-½	321 (300-½)	5920-¾	321 (300-¾)
S-30L	5920-1	292 (300-1)	5920-7/8	292 (300-7/8)
CIRCLING	6180-1 507 (600-1)	6240-1 567 (600-1)	6360-2 687 (700-2)	6860-3 1187 (1200-3)

HIRL Rwy 12L-30R **L**
MIRL Rwy 3-21 and 12R-30L **L**
REL Rwy 12L, 12R and 30L **L**

SW-1, 11 JUN 2026 to 09 JUL 2026

SW-1, 11 JUN 2026 to 09 JUL 2026