

WAAS CH <b>53527</b> <b>W28A</b>	APP CRS <b>275°</b>	Rwy Ldg <b>5001</b> TDZE <b>682</b> Apt Elev <b>684</b>
--	------------------------	---

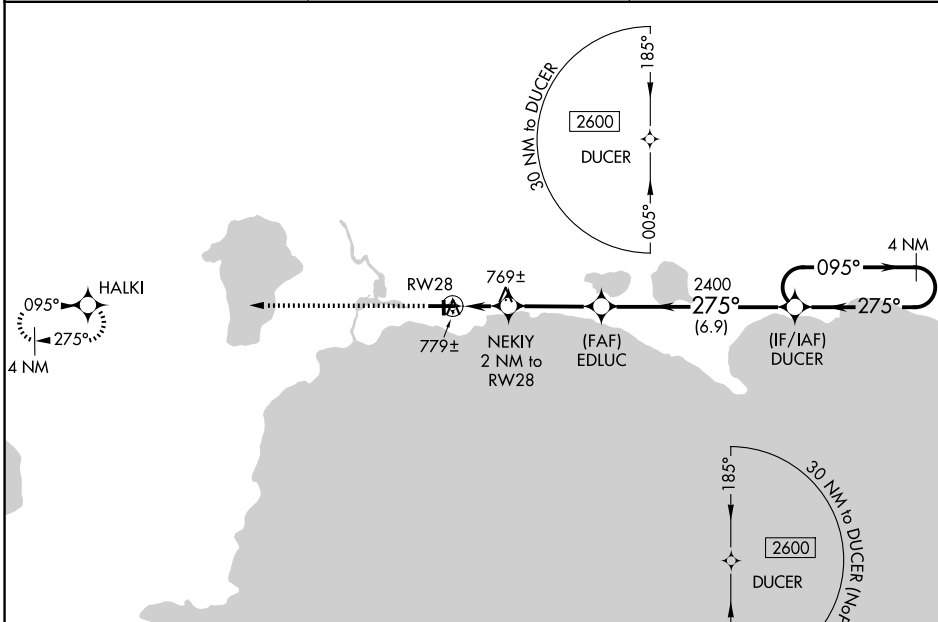
# RNAV (GPS) RWY 28

SCHOOLCRAFT COUNTY (ISQ)

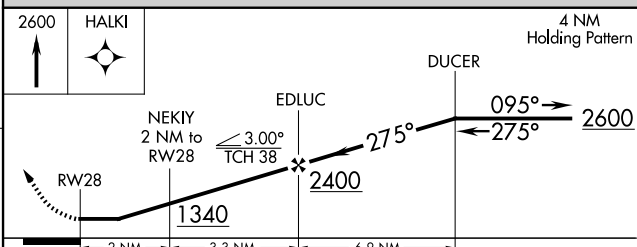
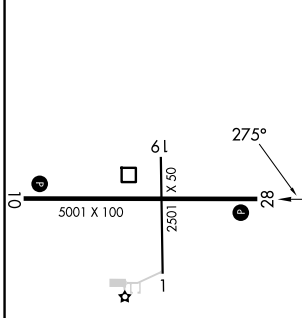
**⚠** When local altimeter setting not received, use Beaver Island altimeter setting and increase all MDA 80 feet, increase LP Cat C and D and Circling Cat D visibility ¼ SM, LNAV Cat C and D visibility ⅓ SM, Circling Cat C visibility ½ SM. When VGSI inop, Straight-In/Circling Rwy 28 procedure NA at night. DME/DME RNP-0.3 NA. Visibility reduction by helicopters NA. Circling to Rwy 1/19 NA at night.

**MISSED APPROACH:**  
Climb to 2600 direct HALKI and hold.

AWOS-3P <b>118.775</b>	MINNEAPOLIS APP CON <b>134.6 354.05</b>	UNICOM <b>122.8 (CTAF) 0</b>
---------------------------	--	---------------------------------



ELEV <b>684</b>	TDZE <b>682</b>
-----------------	-----------------



CATEGORY	A	B	C	D
LP MDA		1020-1	338 (400-1)	
LNAV MDA		1040-1	358 (400-1)	
CIRCLING	1120-1 436 (500-1)	1140-1 456 (500-1)	1280-1½ 596 (600-1½)	1300-2 616 (700-2)

REIL Rwy 28 0  
MIRL Rwy 10-28 0

EC-1, 11 JUN 2026 to 09 JUL 2026

EC-1, 11 JUN 2026 to 09 JUL 2026