

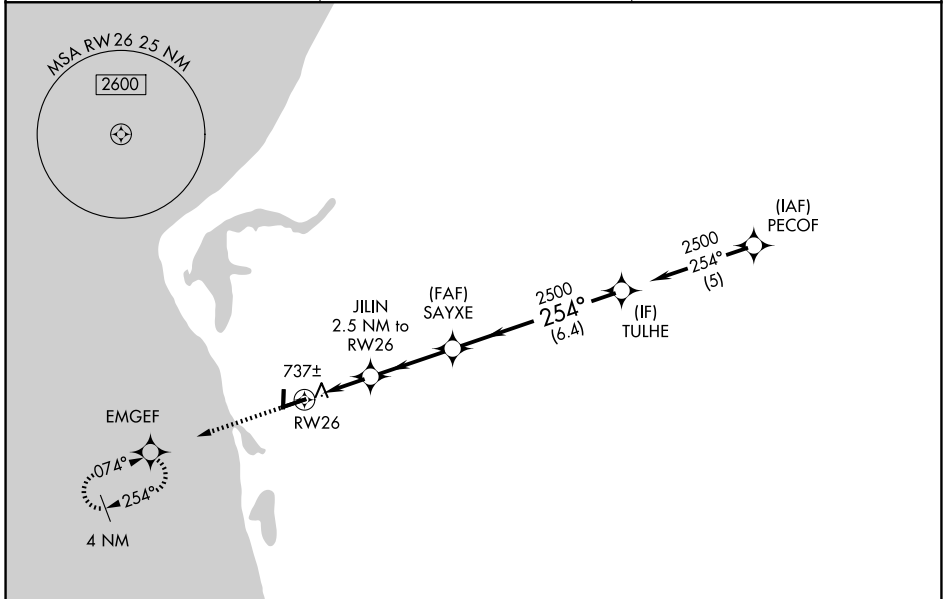
WAAS CH 49206 W26A	APP CRS 254°	Rwy Ldg TDZE 647 Apt Elev 647	5003
--	------------------------	---	-------------

RNAV (GPS) RWY 26

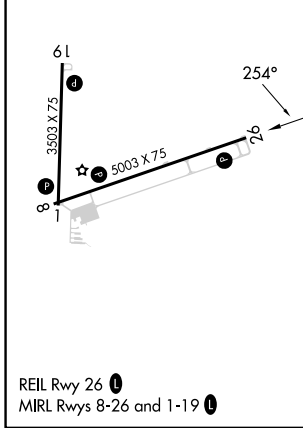
MASON COUNTY (LDM)

RNP APCH-GPS.		MISSED APPROACH: Climb to 2500 direct EMGEF and hold.
<p>⚠ Circling Rwy 1, 19 NA at night. Rwy 26 helicopter visibility reduction below ¾ SM NA. For uncompensated Baro-VNAV systems, LNAV/VNAV NA below -16°C or above 54°C.</p>		

AWOS-3P 119,925	MINNEAPOLIS CENTER 120.85 322.35	UNICOM 123.0 (CTAF) 0
---------------------------	--	---------------------------------



ELEV 647	TDZE 647
-----------------	-----------------



2500	EMGEF	VGSI and RNAV glidepath not coincident (VGSI Angle 3.00/TCH 25).			
		JILIN 2.5 NM to RW26	SAYXE 2500	TULHE	
		1.1 NM to RW26	1.4 NM	3.1 NM	6.4 NM
		1480	2500	2500	GP 3.00° TCH 40
CATEGORY		A	B	C	D
LPV DA			975-1	328 (400-1)	
LNAV/VNAV DA			1020-1	373 (400-1)	
LNAV MDA			1020-1	373 (400-1)	
CIRCLING		1160-1 513 (600-1)	1200-1 553 (600-1)	1260-1¾ 613 (700-1¾)	1460-2¾ 813 (900-2¾)

EC-1, 11 JUN 2026 to 09 JUL 2026

EC-1, 11 JUN 2026 to 09 JUL 2026