

WAAS CH 86433 W24A	APP CRS 243°	Rwy Ldg TDZE Apt Elev	5835 81 86
--	------------------------	-----------------------------	---------------------------------------

RNAV (GPS) RWY 24

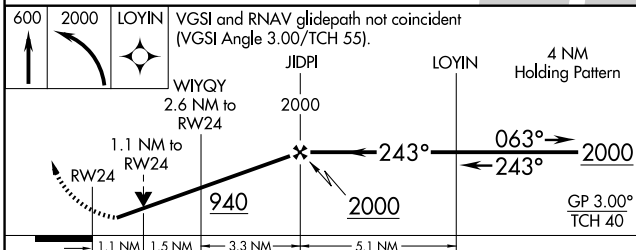
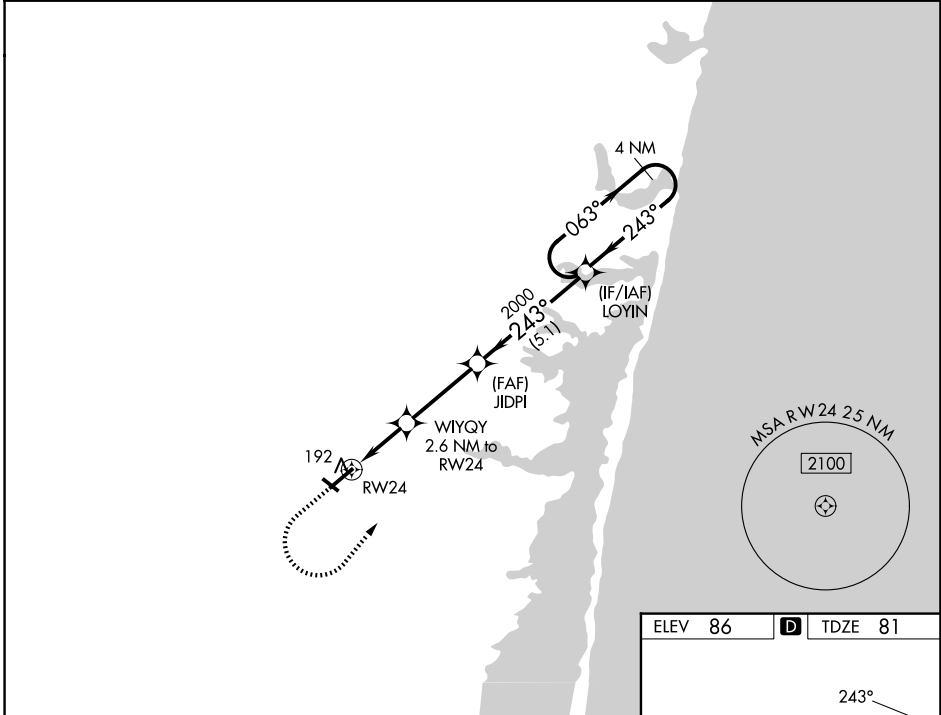
OCEAN COUNTY (MJX)

RNP APCH - GPS.

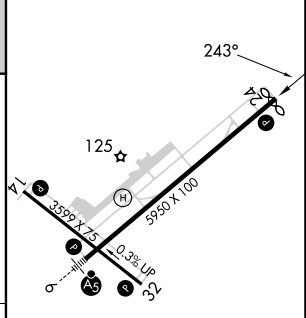
▼ Circling Rwy 14, 32 NA at night. For uncompensated Baro-VNAV systems, LNAV/VNAV NA below -15°C or above 43°C. Rwy 24 helicopter visibility reduction below ¼ SM NA.

MISSED APPROACH: Climb to 600 then climbing left turn to 2000 direct to LOYIN and hold.

AWOS-3PT 119.875	MC GUIRE APP CON 126.475 363.8	UNICOM 122.7 (CTAF) ①
----------------------------	--	---------------------------------



ELEV 86	D	TDZE 81
---------	----------	---------



CATEGORY	A	B	C	D
LPV DA		331-¾	250 (300-¾)	
LNAV/VNAV DA		358-7/8	277 (300-7/8)	
LNAV MDA		460-1	379 (400-1)	
CIRCLING	540-1	560-1	580-1½	700-2
	454 (500-1)	474 (500-1)	494 (500-1½)	614 (700-2)

MIRL Rwy 14-32 ①
 HIRL Rwy 6-24 ①
 REIL Rwy 14, 24 and 32 ①

NE-2, 11 JUN 2026 to 09 JUL 2026

NE-2, 11 JUN 2026 to 09 JUL 2026