

WAAS CH 58027 W19A	APP CRS 187°	Rwy Ldg TDZE Apt Elev	4151 2687 2694
--	------------------------	-----------------------------	---

RNAV (GPS) RWY 19

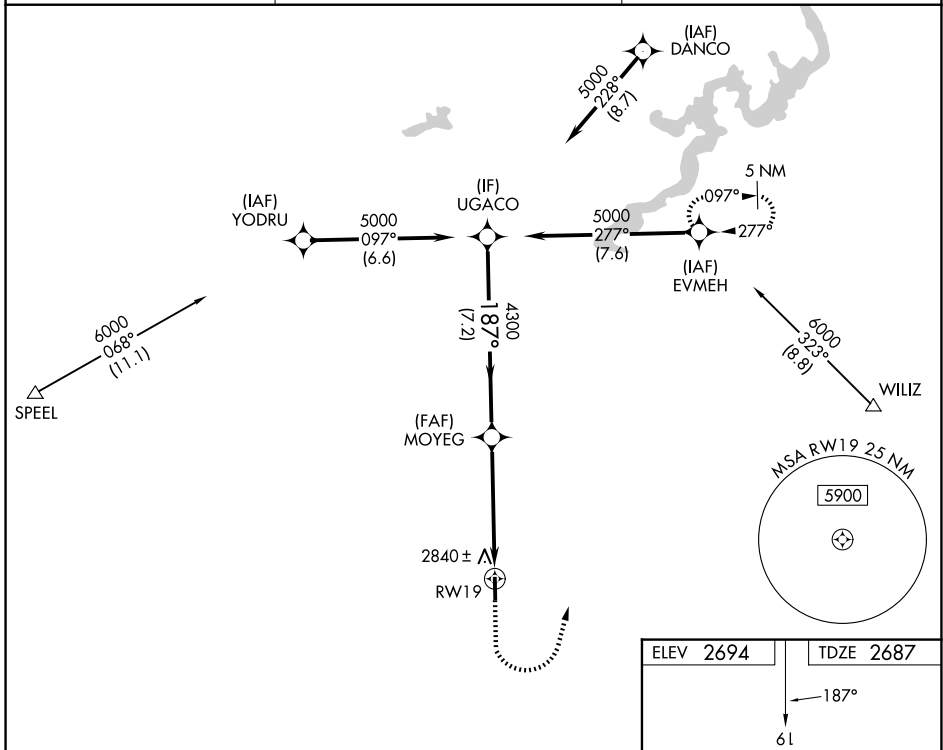
TWIN COUNTY (HLX)

RNP APCH - GPS.

▼ Rwy 19 helicopter visibility reduction below ¼ SM NA. When local altimeter setting not received, use PSK altimeter setting and increase all MDAs 140 feet, increase LP and LNAV visibilities Cats C and D ⅓ SM, and Circling Cat C ¼ SM. VDP NA with PSK altimeter setting.

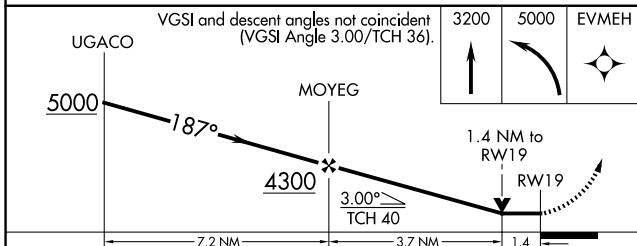
MISSED APPROACH: Climb to 3200 then climbing left turn to 5000 direct EVMEH and hold.

AWOS-3 118.375	ROANOKE APP CON 126.0 339.8	UNICOM 122.8 (CTAF) 0
--------------------------	---------------------------------------	---------------------------------

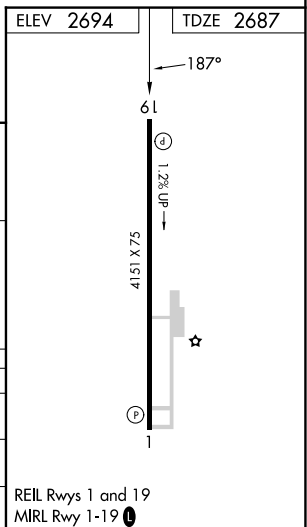


NE-3, 11 JUN 2026 to 09 JUL 2026

NE-3, 11 JUN 2026 to 09 JUL 2026



CATEGORY	A		B		C		D	
	MDA	Alt	MDA	Alt	MDA	Alt	MDA	Alt
LP	3120-1	433 (500-1)	3120-1¼	433 (500-1¼)	3120-1½	433 (500-1½)	3680-3	986 (1000-3)
LNAV	3140-1	453 (500-1)	3140-1⅓	453 (500-1⅓)	3140-1½	453 (500-1½)	3680-3	986 (1000-3)
CIRCLING	3200-1	506 (600-1)	3200-1	506 (600-1)	3200-1	506 (600-1)	3680-3	986 (1000-3)



REIL Rwy 1 and 19
MIRL Rwy 1-19 0