

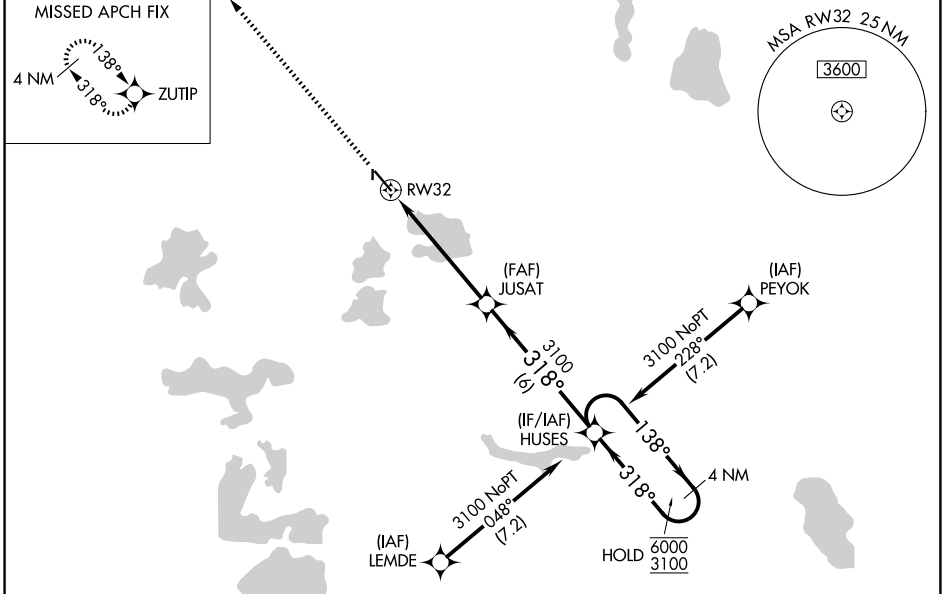
WAAS CH 86704 W32A	APP CRS 318°	Rwy Ldg TDZE Apt Elev	5201 1372 1396
--	------------------------	-----------------------------	---

RNAV (GPS) RWY 32

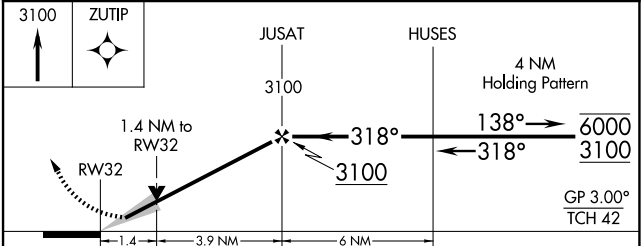
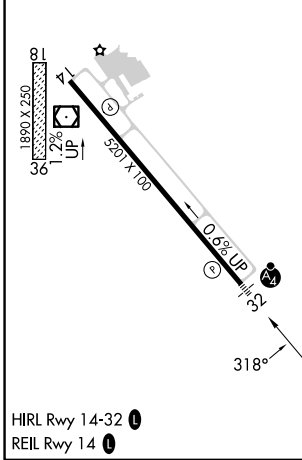
DETROIT LAKES/WETHING FLD (DTL)

RNP APCH-GPS.	MALSF	MISSED APPROACH: Climb to 3100 direct ZUTIP and hold.
<p>⚠ Circling NA to Rwy 18 and 36. Inop table does not apply to LPV.</p> <p>⚠ For uncompensated Baro-VNAV systems, LNAV/VNAV NA below -17°C or above 54°C. For inop ALS, increase LNAV/VNAV all Cats visibility to ½ SM.</p>		

AWOS-3PT 119.075	MINNEAPOLIS CENTER 126.1 269.2	UNICOM 122.8 (CTAF)
----------------------------	--	-------------------------------



ELEV 1396	TDZE 1372
-----------	-----------



CATEGORY	A	B	C	D
LPV DA		1622-3/4	250 (300-3/4)	
LNAV/VNAV DA		1656-3/4	284 (300-3/4)	
LNAV MDA	1860-3/4	488 (500-3/4)	1860-1 1/8	488 (500-1 1/8)
CIRCLING	1860-1	464 (500-1)	2080-2 684 (700-2)	2140-2 1/2 744 (800-2 1/2)

NC-1, 11 JUN 2026 to 09 JUL 2026

NC-1, 11 JUN 2026 to 09 JUL 2026