


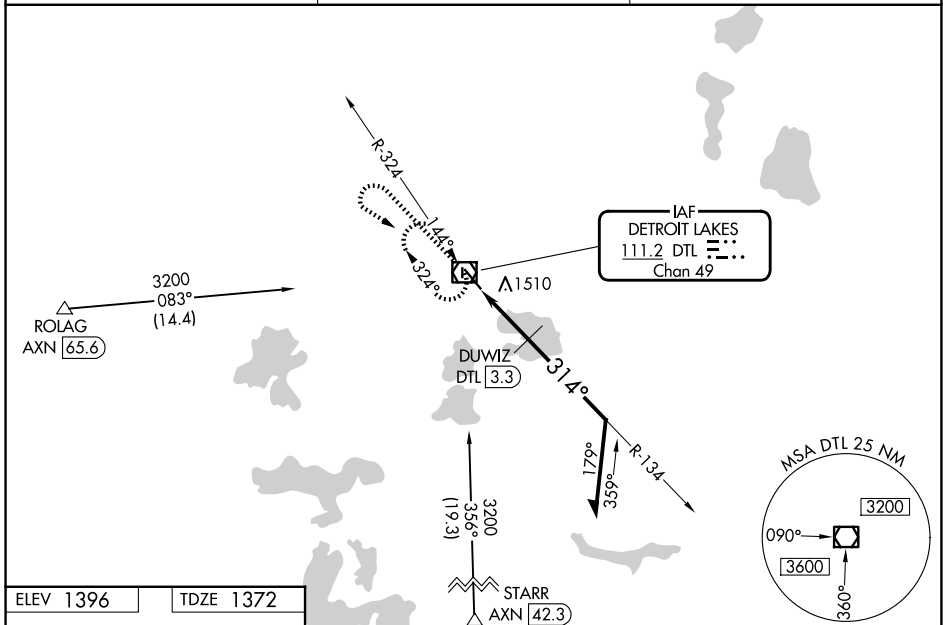
VOR/DME DTL <b>111.2</b> Chan <b>49</b>	APP CRS <b>314°</b>	Rwy Ldg TDZE <b>1372</b> Apt Elev <b>1396</b>	<b>5201</b>
---	------------------------	---	-------------

# VOR RWY 32

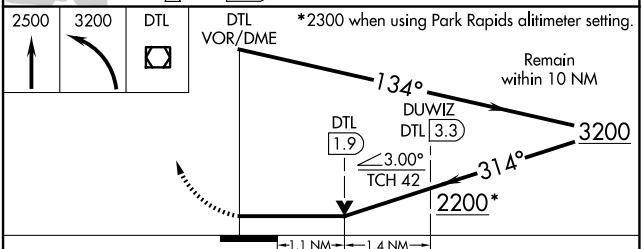
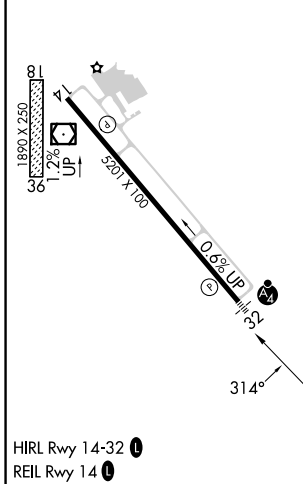
DETROIT LAKES/WETHING FLD (DTL)

<p><b>NA</b> Circling NA to Rwy 18 and 36. VDP NA with Park Rapids altimeter setting. When local altimeter setting not received, use Park Rapids altimeter setting and increase all MDA 100 feet and visibility Cat A ¼ SM, Cats C and D ½ SM and Circling Cats A and C ¼ SM, Cat D ½ SM. DUWIZ fix minimums: increase visibility Cats C and D ¼ SM. For inop ALS, increase S-32 Cats C and D visibility to 2½ SM. Inop table does not apply to S-32 Cats C and D when using Park Rapids altimeter setting.</p>	<p><b>MALSF</b></p> 	<p><b>MISSED APPROACH:</b> Climb to 2500 then climbing left turn to 3200 direct DTL VOR/DME and hold, continue climb-in-hold 3200.</p>
---	---	--

<p>AWOS-3PT <b>119.075</b></p>	<p>MINNEAPOLIS CENTER <b>126.1 269.2</b></p>	<p>UNICOM <b>122.8 (CTAF)</b></p>
------------------------------------	--	---------------------------------------



ELEV 1396	TDZE 1372
-----------	-----------



CATEGORY	A	B	C	D
S-32	2200-¾ 828 (900-¾)	2200-1 828 (900-1)	2200-2	828 (900-2)
CIRCLING	2200-1 804 (900-1)	2200-1¼ 804 (900-1¼)	2200-2½	804 (900-2½)
<b>DUWIZ FIX MINIMUMS</b>				
S-32	1760-¾ 388 (400-¾)	1760-7/8	388 (400-7/8)	
CIRCLING	1820-1 424 (500-1)	1860-1 464 (500-1)	2080-2 684 (700-2)	2140-2½ 744 (800-2½)

NC-1, 11 JUN 2026 to 09 JUL 2026

NC-1, 11 JUN 2026 to 09 JUL 2026