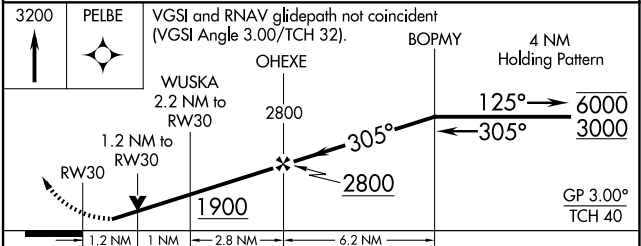
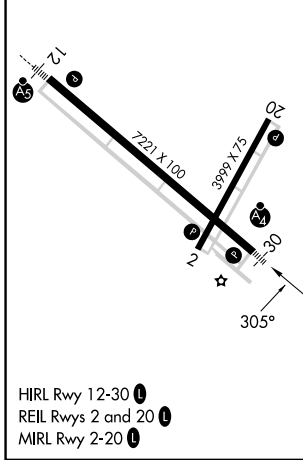
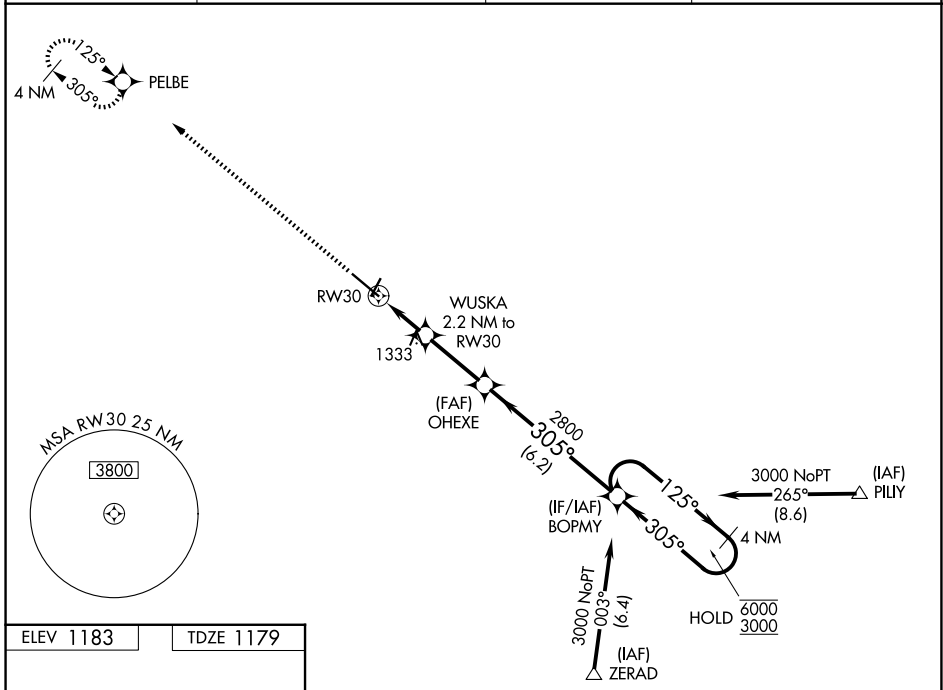


WAAS CH <b>86321</b> <b>W30A</b>	APP CRS <b>305°</b>	Rwy Ldg <b>7221</b> TDZE <b>1179</b> Apt Elev <b>1183</b>
--	------------------------	---

# RNAV (GPS) RWY 30

SOUTHWEST MINNESOTA RGNL MARSHALL/RYAN FLD (MML)

RNP APCH - GPS		MALSF	MISSED APPROACH: Climb to 3200 direct PELBE and hold.
AWOS-3PT <b>120.150</b>	MINNEAPOLIS CENTER <b>127.1 290.2</b>	GCO <b>121.725</b>	UNICOM <b>122.8 (CTAF) 0</b>



CATEGORY	A	B	C	D
LPV DA		1429- <sup>3</sup> / <sub>4</sub>	250 (300- <sup>3</sup> / <sub>4</sub> )	
LNAV/VNAV DA		1464- <sup>3</sup> / <sub>4</sub>	285 (300- <sup>3</sup> / <sub>4</sub> )	
LNAV MDA	1600- <sup>3</sup> / <sub>4</sub>	421 (500- <sup>3</sup> / <sub>4</sub> )	1600-1	421 (500-1)
CIRCLING	1640-1	457 (500-1)	1820-1 <sup>3</sup> / <sub>4</sub> 637 (700-1 <sup>3</sup> / <sub>4</sub> )	1840-2 657 (700-2)

# RNAV (GPS) RWY 30

NC-1, 11 JUN 2026 to 09 JUL 2026

NC-1, 11 JUN 2026 to 09 JUL 2026