

RNAV (GPS) RWY 18

NACOGDOCHES A L MANGHAM JR RGNL (OCH)

APP CRS	Rwy Ldg	5001
177°	TDZE	343
	Apt Elev	343

RNP APCH-GPS.

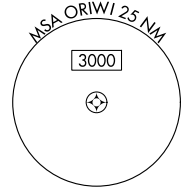
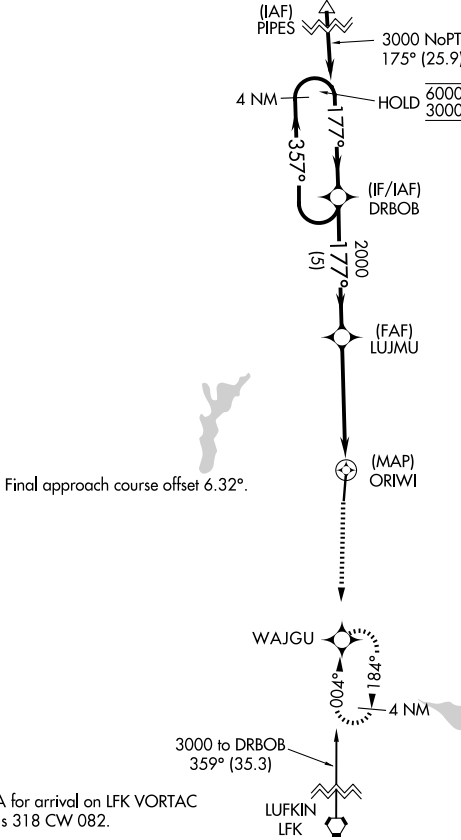
⚠ Rwy 18 helicopter visibility reduction below 1 SM NA. When local altimeter setting not received, use LFK altimeter setting: Increase all MDAs 60 feet and visibility Cat C $\frac{1}{4}$ SM.

MISSED APPROACH: Climb to 2400 direct WAJGU and hold, continue climb-in-hold.

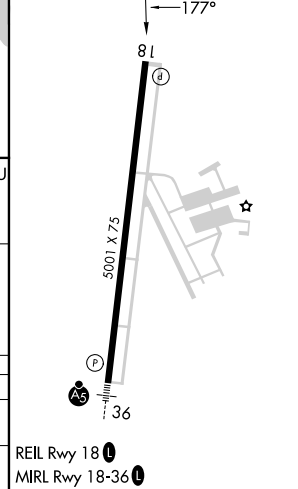
AWOS-3PT
135.625

HOUSTON CENTER
125.175 285.575

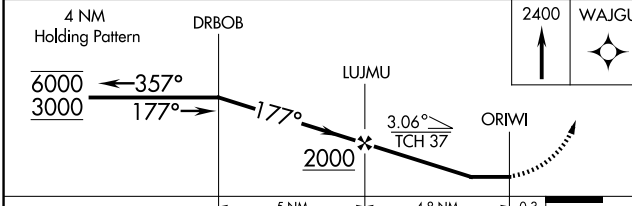
UNICOM
123.0(CTAF) 0



ELEV 343	TDZE 343
----------	----------



Procedure NA for arrival on LFK VORTAC
airway radials 318 CW 082.



CATEGORY	A	B	C	D
LNVA MDA	980-1	637 (700-1)	980-1 $\frac{3}{4}$ 637 (700-1 $\frac{3}{4}$)	NA
CIRCLING	980-1	637 (700-1)	1080-2 737 (800-2)	NA

RNAV (GPS) RWY 18

SC-5, 11 JUN 2026 to 09 JUL 2026

SC-5, 11 JUN 2026 to 09 JUL 2026