

WAAS CH <b>93528</b> <b>W36A</b>	APP CRS <b>003°</b>	Rwy Ldg TDZE Apt Elev	<b>5001</b> <b>343</b> <b>343</b>
--	------------------------	-----------------------------	---

# RNAV (GPS) RWY 36

NACOGDOCHES A L MANGHAM JR RGNL (OCH)

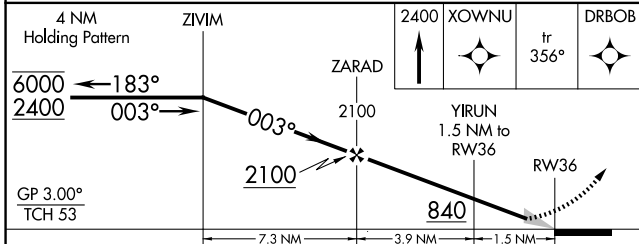
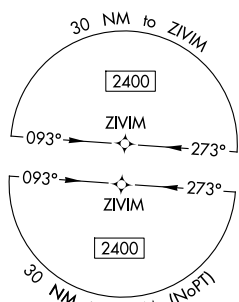
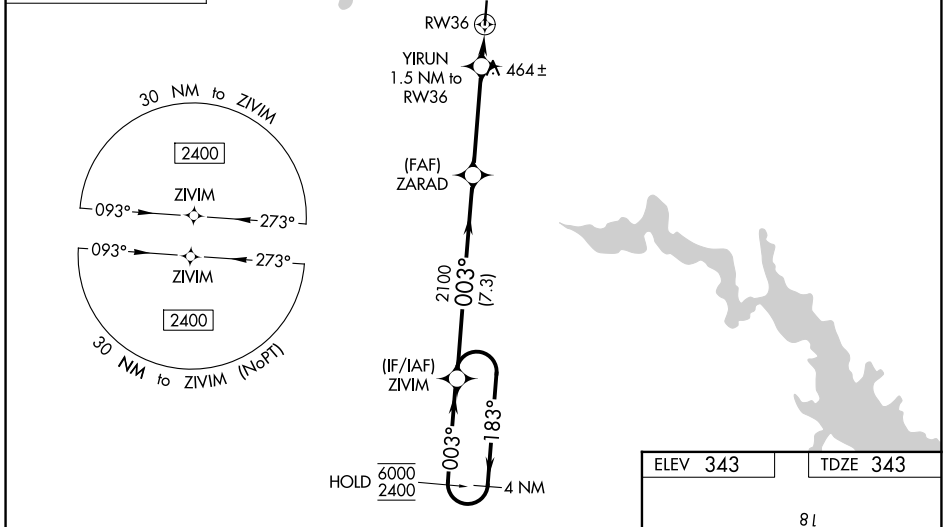
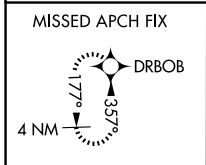
RNP APCH-GPS.

▼ Baro-VNAV NA when using LFK altimeter setting. For uncompensated Baro-VNAV systems, LNAV/VNAV NA below -15°C or above 54°C. When local altimeter setting not received, use LFK altimeter setting: Increase LPV DA to 598 feet; increase LNAV/VNAV DA to 680 feet; increase all MDAs 60 feet and LNAV visibility Cat C 1/8 SM, and Circling visibility Cat C 1/4 SM.

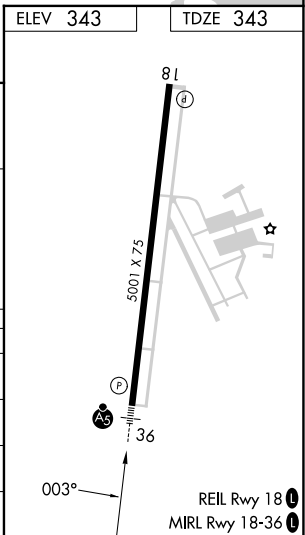


MISSED APPROACH: Climb to 2400 direct XOWNU and on track 356° to DRBOB and hold.

AWOS-3PT <b>135.625</b>	HOUSTON CENTER <b>125.175 285.575</b>	UNICOM <b>123.0 (CTAF) 0</b>
----------------------------	--	---------------------------------



CATEGORY	A	B	C	D
LPV DA	543-1/2	200 (200-1/2)		NA
LNAV/VNAV DA	625-1/2	282 (300-1/2)		NA
LNAV MDA	720-1/2	377 (400-1/2)	720-5/8 377 (400-5/8)	NA
CIRCLING	860-1	517 (600-1)	1080-2 737 (800-2)	NA



SC-5, 11 JUN 2026 to 09 JUL 2026

SC-5, 11 JUN 2026 to 09 JUL 2026