

# FTHLS SIX DEPARTURE (RNAV)

AL-5651 (FAA)

SCOTTSDALE (SDL)  
SCOTTSDALE, ARIZONA

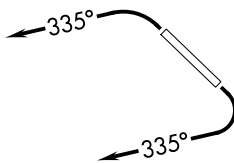
SW-4, 11 JUN 2026 to 09 JUL 2026

### TAKEOFF MINIMUMS

Rwy 3: Standard with minimum climb of 445' per NM to 4600.  
Rwy 21: Standard with minimum climb of 300' per NM to 4600.

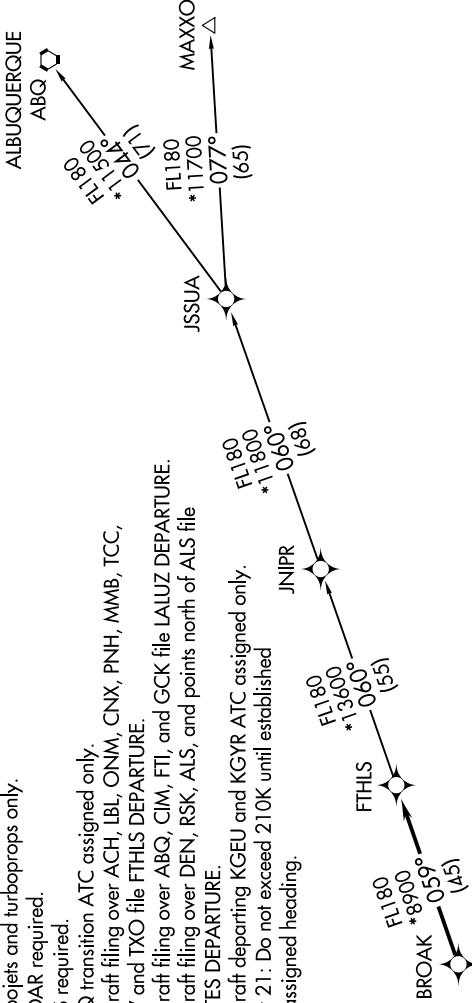
- NOTE: RNAV 1.
- NOTE: Turbojets and turboprops only.
- NOTE: RADAR required.
- NOTE: GPS required.
- NOTE: ABQ transition ATC assigned only.
- NOTE: Aircraft filing over ACH, LBL, ONM, CNX, PNH, MMB, TCC, IRW and TXO file FTHLS DEPARTURE.
- NOTE: Aircraft filing over ABQ, CIM, FTI, and GCK file LALUZ DEPARTURE.
- NOTE: Aircraft filing over DEN, RSK, ALS, and points north of ALS file YOTES DEPARTURE.
- NOTE: Aircraft departing KGEU and KGYR ATC assigned only.
- NOTE: Rwy 21: Do not exceed 210K until established on assigned heading.

PHOENIX DEP CON  
120.7 239.0  
ATIS  
118.6  
CLINC DEL  
124.8  
GND CON  
121.6  
SCOTTSDALE TOWER\*  
119.9



N

### TOP ALTITUDE: ASSIGNED BY ATC



### DEPARTURE ROUTE DESCRIPTION

**TAKEOFF RUNWAY 3:** Climbing left turn heading 335° or as assigned by ATC, thence. . . .  
**TAKEOFF RUNWAY 21:** Climbing right turn heading 335° or as assigned by ATC. Thence. . . .  
 . . . expect RADAR vectors to BROAK, then on track 059° to FTHLS, then on (transition).  
 Maintain ATC assigned altitude, expect filed altitude 3 minutes after departure.

ALBUQUERQUE TRANSITION (FTHLS6.ABQ)

JNIPR TRANSITION (FTHLS6.JNIPR)

MAXXO TRANSITION (FTHLS6.MAXXO)

NOTE: Chart not to scale.

SW-4, 11 JUN 2026 to 09 JUL 2026