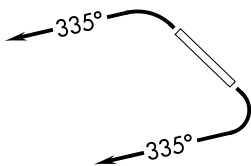
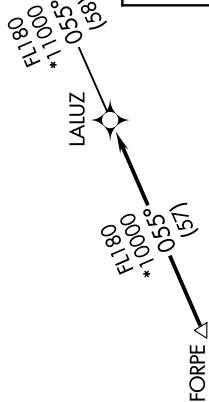
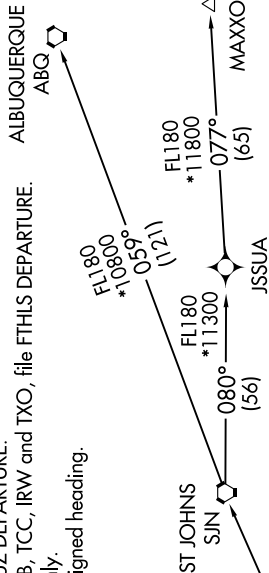


PHOENIX DEP CON
120.7 239.0
ATIS
118.6
CLINC DEL
124.8
GND CON
121.6
SCOTTSDALE TOWER*
119.9

NOTE: RNAV 1.
NOTE: Turbojets and turboprops only.
NOTE: RADAR required.
NOTE: GPS required.
NOTE: SJN TRANSITION for ABQ terminal arrivals only.
NOTE: MAXXO TRANSITION ATC assigned only.
NOTE: Aircraft filing over DEN, RSK, ALS, and points north of ALS, file YOTES DEPARTURE.
NOTE: Aircraft filing over ABQ, CIM, FTI, and GCK, file LALUZ DEPARTURE.
NOTE: Aircraft filing over ACH, IBL, ONM, CNX, PNH, MMB, TCC, IRW and TXO, file FTHLS DEPARTURE.
NOTE: Aircraft departing KGEU and KGYR ATC assigned only.
NOTE: Rwy 21: Do not exceed 210K until established on assigned heading.

**TOP ALTITUDE:
ASSIGNED BY ATC**

ALBUQUERQUE
ABQ



DEPARTURE ROUTE DESCRIPTION

TAKEOFF RUNWAY 3: Climbing left turn heading 335° or as assigned by ATC, thence. . . .
TAKEOFF RUNWAY 21: Climbing right turn heading 335° or as assigned by ATC. Thence. . . .

. . . expect RADAR vectors to FORPE, then on track 055° to LALUZ, then on (transition). Maintain ATC assigned altitude, expect filed altitude 3 minutes after departure.

ALBUQUERQUE TRANSITION (LALUZ6.ABQ)
MAXXO TRANSITION (LALUZ6.MAXXO)
ST JOHNS TRANSITION (LALUZ6.SJN)

TAKEOFF MINIMUMS

Rwy 3: Standard with minimum climb of 445' per NM to 4600.
Rwy 21: Standard with minimum climb of 300' per NM to 4600.

NOTE: Chart not to scale.